

Coach - Leslie M. Orcutt

• Losers

Capt. - Russell "Rusty" Kneeland

|       |            |                     |           |
|-------|------------|---------------------|-----------|
| NHS   | 19         | @ Bunchard, Andover | 0         |
|       | 7          | Marblehead          | 13        |
| (Tie) | 7          | Essex Aggies        | 7         |
|       | 0          | @ Lawrence          | 20        |
|       | 20         | Melrose             | 0         |
|       | 14         | Dorchester          | 6         |
|       | 30         | Bunchard, Andover   | 0         |
|       | 33         | Gloucester          | 0         |
| (Tie) | 0          | @ Amesbury          | 0         |
|       | <u>130</u> |                     | <u>46</u> |

Won 5 Lost 2 Tied 2

### NOTES

Tim Haughton (Capt.), Sam Edelstein, Carl Cahill playing for Rents' Hill.

Tim Herlihy - end on U of Maryland Fresh.

### ROSTER -

|     |                          |                     |                |
|-----|--------------------------|---------------------|----------------|
| RE  | Ralph "Red" Carey        | Hamilton Conant     | Ray Sullivan   |
| RT  | Bertram Woodward         | Edward Fitzgerald   | Leo Bloom      |
| RG  | George Littlefield       | Samuel Ossem        | Leslie Thurlow |
| C   | Wm. Hicks                | Thomas Littlefield  | Ray Currier    |
| LG  | Robert Haggard           |                     |                |
| LT  | Warren Toppam            | Frank Traister      | Louis Ginsburg |
| LE  | Dudley "Dud" Sanders     | Thomas Ripby        | Elson          |
| QB  | Russell Kneeland (Capt.) | Jack Erickson       |                |
| RHB | Fred Carver              | Clement Hilton      |                |
| LHB | Allan Clarkson           | George "Mose" Avery | Henry Welch    |
| FB  | Allen Paterson           | Samuel Swartz       |                |

(Over)

10/2

NHS 19 @ Burchard, Andover 0

Uline opener in brilliant contest.

make most of yardage on line plunges  
& end runs.

Hazard, Hicks &amp; E. Littlefield strong in line.

7-0 at half on a 5 yds. plunge by Carver.

In 2nd half a 40 yds. end run by Carver  
set up a TD end run by Clarkson.

Barterson &amp; Clarkson made some good runs.

TD - Carver 1 (5 yds. run)

Goal

-TD - Barterson 1

Clarkson 1 (rush)

Barterson 1 (rush)

10/6

NHS

7

Marblehead

13

Locals lose - breaks against them -  
not outclassed.Npts. TD was scored in 1st period when  
they started on their own 40. Steady rushing brought  
ball to M 3 where Carver went over for TD.Marb. tied it up when a M player snatched  
up a bad NHS pass from center & raced 60 yds. for TD.Marb. blocked a NHS punt & recovered on  
N 30 - a pass brought it to the 1 where they scored.

Hazard, E. Littlefield, Carver, Hicks played well.

TD - Carver 1 (3 yds. run)

Goal

-TD - Barterson 1

10/12

NHS

7

Essex Aggies

7

The steel lockers at the new field  
house at South End Park are in place & were  
used for the first time yesterday.Essex Aggies scored 1st in the 3rd period  
on a 40 yds. end run - NHS tied it up in 4th per.EA used mostly "open plays" completing  
many forward passes.

(Continued)

1920

# Essex Aggie (cont.)

NHS scored in the 4<sup>th</sup> period on steady line plunges by Kneeland & Clarkson with Clarkson scoring. Gaterson kicked the tying goal.

Clarkson, Carey, G. Littlefield, Hazard and Traister excelled. Ginsburg fractured his wrist.

TD - Clarkson 1 (rush)

Goal - Gaterson 1  
- TD

10/14 NHS 0 @ Lawrence 20

Lose 2<sup>nd</sup> game in loosely played contest - frequent fumbles.

Law. scored in 1<sup>st</sup> few minutes when a bad pass from center went over Clarkson's head into end zone - Law. recovering for a TD.

13-0 at half.

Sanders caught passes for 11 & 30 yds.

Traister & Hazard played well - Hazard on a "tackle around play" made large gains.

Woodward's knee gave out.

10/30 NHS 20 Melrose 0

Locals show snap & zip they've been lacking as they score in 1<sup>st</sup>, 2<sup>nd</sup> & last periods.

Npt. completely dominated - visitors lack of a punter hurt.

Hazard & Kneeland played exceptionally well.

NHS 1<sup>st</sup> TD was on steady line plunging with Kneeland going over.

Npt. fumbled on Melrose 1 ft. line in 3<sup>rd</sup> period.

TD - Carver 2 (rush)

Goals - Hazard 2  
- TD

Kneeland 1 (rush)

(Over)

(248)

1920.

11/6

NHS 14 Dorchester

6

Surprises Dorch. 11 - outplays over confident faces

Game won by hard line plunging.

Dorch. completed many passes - score in last second of play.

In 2<sup>nd</sup> period Npt. got a break when they recovered a bad pass from center on Dorch. 25.

Line plays brought ball to 7 where Carver scored.

Carver scored again on a 5 yd. run in 3<sup>rd</sup> per.

Kneeland, Sanders & Clarkson were outstanding.

TD - Carver 2 (7 & 5 yd. runs)

Goals - Hazard 1  
- TD - Carver 1

Armistice  
11/11

NHS 30

Bunchard, Andover

0

Npt. has easy time - roll thru visitors despite loss of 3 regulars.

NHS scored safety when G. Littlefield tackled punter in end zone.

9-0 at halftime.

Subs played last period & did well.

On 1 occasion the "lines" were brought out to measure but the line broke & officials had to estimate distance.

TD - Carver 1  
Hazard 1  
Swartz 1  
Welch 1

Safety - Npt.  
(G. Littlefield tackled punter in end zone)

Goals - Hazard 4  
- TD

249

(Continued)



11/20

NHS

33

1920

Gloucester

0

Locals have Glouc. completely at their mercy.

Game close in 1st half - explode for 3 TD's in 3rd period.

St. Littlefield was a bear on defence.

Carver starred with 4 TD's including runs of 50 & 65 yds.

Welch scored on a pass from Erickson.

Goals

TD - Nagard 3

TD - Carver 4

Welch 1

Thambs  
11/25

NHS

0

@ Amesbury

0

Big grid contest ends in tie - huge crowd of 4,000.

Weather conditions hamper both teams - snow falling - slushy.

Amesbury ends season Unscored On 12 games

91% of NHS pupils encourage team.

Amesbury Cadet Band led AHS parade to field. NHS rosters & their band marched from Ferry to the grounds.

Few fumbles - game well played - Npt. heavier.

The Littlefield brothers recovered nearly all the fumbles & probably saved game.

Carver was Npt. star - the last play of the game was his best when he tackled Murphy after he had gotten away for a 65 yd. run.

Clarkson played w/ badly injured knee.

|            | N  | A   |              | N   | A   |
|------------|----|-----|--------------|-----|-----|
| 1st Downs  | 5  | 7   | Yds. Passing | 25  | 5   |
| Rush. Yds. | 87 | 181 | Games Compl. | 1/2 | 1/3 |

(270)

(Over)

1920

Scoring - 1920

|                  | <u>TD</u> | <u>Goals</u><br><u>- TD</u> | <u>Total</u><br><u>Pts.</u> |
|------------------|-----------|-----------------------------|-----------------------------|
| Fred Carver      | 11        | 1                           | 67                          |
| Robert Hazard    | 1         | 10                          | 16                          |
| Allan Clarkson   | 2         |                             | 12                          |
| Henry Welch      | 2         |                             | 12                          |
| Allen Patterson  | 1         | 3                           | 9                           |
| Russell Kneeland | 1         |                             | 6                           |
| Sam Swartz       | 1         |                             | 6                           |
|                  | <u>19</u> | <u>14</u>                   | <u>128</u>                  |

Safety in 30-0 Punch game + 2\*

# High School Park South End

NHS - 1921

Coach - Leslie W. Orcutt

Capt. - Fred Carver

Mgr. - Kelley

• Loses

|       |    |                  |    |
|-------|----|------------------|----|
| NHS • | 7  | Somerset N.H.    | 9  |
|       | 7  | Exeter High      | 0  |
|       | 13 | Rochester        | 2  |
|       | 7  | Essex Aggie      | 0  |
| •     | 0  | @ Salem          | 16 |
| (Tie) | 7  | Dorchester       | 7  |
|       | 13 | Brewster Academy | 10 |
| •     | 7  | Amesbury         | 14 |
|       | 61 |                  | 58 |

Won 4 Lost 3 Tied 1

## QUOTE -

"The football opener should find the school solidly behind the boys who are defending the honor of our school. Get the old yell going & make them loud & strong for the Crimson & Old Gold."

## ROSTER -

|     |                      |                        |               |
|-----|----------------------|------------------------|---------------|
| LE  | Bill Elliott         | Ralph Hills            |               |
| LT  | Sam Snyder           | Rupert Nock            |               |
| LG  | Leo Bloom            | Sam Olsen              | Prescott      |
| C   | Wm. Hicks            | Malcolm "Mac" Hoyt     |               |
| RG  | Ohlsen               | Edward Mason           | Malcolm Smith |
| RT  | Dodge                | N. Smith               |               |
| RE  | Albert Perkins       | Hamilton Conant        |               |
| QB  | John "Jack" Erickson | Charlie "Husky" Arnold | James Brudno  |
| LHB | Clement Helton       | George Avery           | Herb Trumbull |
| RHB | Fred Carver (Capt.)  | Edward Kelley          | Art Maymishan |
| FB  | Allen Gaterason      | Hugh Weir              |               |

(Over)

272

1921

10/1

NHS

7

Somersworth

9

Capt. Fred Carver out indefinitely with cartilage injury suffered in pre-season scrimmage.

Somersworth 11 wins by 2 pts. in contest lacking brilliant plays.

A lucky dropkick from field beat NHS in last quarter - ball hit crossbar & bounded over.

NHS could make yardage but couldn't score - once reaching Somersworth 1 ft. line.

Npt. scored in 2<sup>nd</sup> quarter when Avery completed a 15 yd. pass to Hills in the end zone.

TD - Hills 1 (15 yd. pass from Avery)

Goal - Baterson 1  
- TD

10/8

NHS

7

Exeter High

0

NHS wins game in closing minutes - recover fumble on Exeter 7 - Kelley scores on a plunge. Last part of game played in a heavy shower.

The best plays of the afternoon were 2 pass plays - Erickson to Perkins & Kelley to Elliott - 25 yds. ea.

On defense Elliott was the big star - Perkins, Avery, Hilton & Kelley performed well.

TD - Kelley 1 (rush) Goal - Baterson 1  
- TD

10/15

NHS

13

Rochester

2

Npt. plays best game of season - lose 2 scoring opportunities in 1<sup>st</sup> half.

NHS scored both TD's in 2<sup>nd</sup> half.

Elliott was again a terror on defense while Nock, Ohlsen & Hicks played well. Baterson gained ground consistently.

TD - Hicks 1 Goal - Baterson 1  
Hilton 1 - TD



1921

NOTE

The new bleachers at the High School Park in the South End which will seat 600 persons are to be painted and also lettered "Reserved". The construction of seats on the opposite side of the field is being considered. Capacity will be 2,400.

10/22

NHS

7

Essex Aggie

0

NHS scores at beginning of last quarter to win hard-fought contest.

NHS had mostly line plunging - Aggie forward passes.

Locals get their chance to score near end of 3rd quarter starting at Aggie 30. Steady gains went to the 5. On a line plunge thru center the ball was fumbled & Erickson recovered for a 1st down. Avery finally scored & Oaterson kicked the point perfectly.

TD - Avery 1 (rush) Goal - Oaterson 1  
- TD

10/29

NHS

0

@ Salem

16

NHS outplayed in 1st game between rivals since 1916 - inferior work by Locals - didn't wake up until 2nd half - too late then.

Salem's attack was mainly off-tackle plays - far outweigh Locals.

NHS fairly well banged up in contest - Avery & Elliott had to leave game.

Kelley & Oaterson were chief ground gainers & were outstanding on defense.

Npt. reached Salem 20 in last period - tried many passes, most failed.

(274)

(Over)

1921

11/5

NHS

7

Dorchester

7

Fumble keeps locals from victory -  
fumbled near end of game on Dorch. 20.

NHS took opening kickoff on their 30 &  
marched steadily downfield with Baterson plunging  
over & then kicked the goal.

Baterson & Kelley played best games of their lives.

NHS made 14 1st downs, Dorch. 5

Cold wind swept the field causing the fumbles.  
Smith & Snyder played exceptionally well in line.

TD - Baterson 1 (rush) Goal - Baterson 1

11/12

NHS

13

Brewster Academy,  
Wolfeboro, N.H.

10

Brilliant forward pass wins for locals  
in last few minutes - snatch victory away from Brewster.

With the ball on Brewster 35 Ohlsen went  
back into punt formation. Instead he fired a  
pass to Perkins on the 15 who raced into the end  
zone for a thrilling victory.

Npt. scored their 1st TD aided by a big  
penalty - Erickson going over for the TD.

Ohlsen played an exceptional game - Erickson  
& Maynham (45 yd. run) did well.

TD - Erickson 1 (rush)

Perkins 1 (45 yd. pass & run  
from Ohlsen)

Goal - Baterson 1

(275)

(Continued)

T. Hambe,  
11/24

1921

NHS

7

Amesbury

14

Football battle waged in cold raging <sup>storm</sup> snow-

Amesbury wins in wretched conditions -  
game was mainly line plunging.

NHS unable to cope with Amesbury's heavy  
guards & tacklers.

Amesbury scored in 2<sup>nd</sup> & last periods.

NHS scored in very last part of 4<sup>th</sup> quarter  
- score on passing heroics of Capt. Carver who entered  
game in 2<sup>nd</sup> half after being out all season  
with a cartilage injury.

He first passed to Erickson for 35 yards  
& then another pass to Moynihan for the TD.

1<sup>st</sup> AHS victory over Npts since 1916.

Huge crowd of 4,000 watch struggle.

Capt. Rice was the big star for Ames.

Snyder, Nock, Elliott, Conant & Kelley played well.

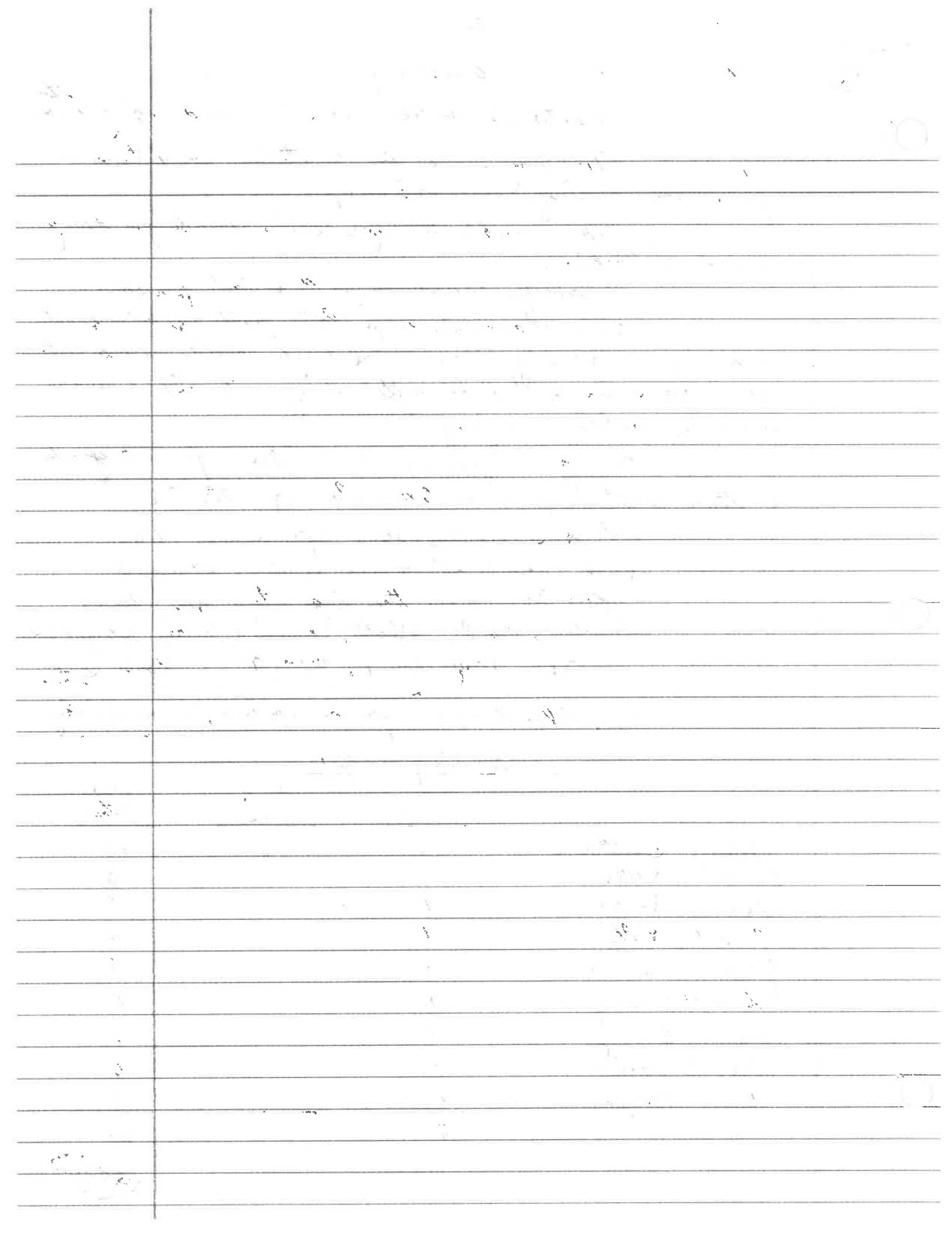
TD - Moynihan 1 (pass from Carver) Goal  
- TD - Patterson.

NHS Cheerleaders - James Clarkson, Tom Bibby

### Scoring - 1921

|                 | TD | Goals<br>- TD | Total<br>Pts. |
|-----------------|----|---------------|---------------|
| Allan Patterson | 1  | 7             | 13            |
| Ralph Hills     | 1  |               | 6             |
| William Hicks   | 1  |               | 6             |
| Clement Hilton  | 1  |               | 6             |
| "Jack" Erickson | 1  |               | 6             |
| Edward Kelley   | 1  |               | 6             |
| Charles Avery   | 1  |               | 6             |
| Albert Perkins  | 1  |               | 6             |
| Art Moynihan    | 1  |               | 6             |
|                 | 9  | 7             | 41            |

(276)





## • Losses

Coach - Starr King

Capt. - Frederick Carver

|     |                  |             |   |
|-----|------------------|-------------|---|
| NHS | 20               | Exeter High | 0 |
| 4   | @ Nashua         | 13          |   |
| 46  | Essex Aggies     | 7           |   |
| 0   | @ Lawrence       | 25          |   |
| 6   | Salem            | 0           |   |
| 36  | Brewster Academy | 0           |   |
| 19  | @ Portsmouth     | 0           |   |
| 44  | Danvers          | 0           |   |
| 79  | Gloucester       | 0           |   |
| 256 |                  | 45          |   |

Won 7, Lost 2

NEW RULES

Try for Point - Can bring ball to any position in field not closer than 5 yds. to goal line. Can try drop kick, placement, run or forward pass - it will count 1 point.

Shift Player - must come to a complete stop after shifting.

"Fighting Team" of '22ROSTER -

✓ Letters

|       |                         |   |                        |                          |
|-------|-------------------------|---|------------------------|--------------------------|
| RE ✓  | Albert Perkins          | ✓ | Jack Johnson           |                          |
| RT ✓  | Ihlsen                  | ✓ | Frederick Carver       | ✓ Frederick Sullivan     |
| RG ✓  | Sam Snyder              | ✓ | Everett "Tub" Groves   | ✓ Donald Torrey          |
| C ✓   | Rupert Nock             | ✓ | Sam Olsen              |                          |
| LG ✓  | Edward Mason            | ✓ | N. Smith               | ✓ McLaughlin             |
| LT ✓  | Wm. Elliott             |   | Malcolm "Mac" Hoyt     | ✓ John Collins           |
| LE ✓  | Ralph Hills             | ✓ | Maxwell Trebeck        | ✓ Edward Regan           |
| QB ✓  | John "Jack" Erickson    | ✓ | Charles "Husky" Arnold | ✓ Richard Johnson        |
| RHB ✓ | Art Moynihan            | ✓ | Worcester Hilton       | Thomas "Red" Dockery     |
| LHB ✓ | Edward Kelley           | ✓ | Hugh "Uglier" Weir     |                          |
| FB ✓  | Clement "Lemons" Hilton | ✓ | Allen Paterson         | ✓ Herb "Punkie" Trumbull |

(Over)

1922

10/7

NHS

20

Exeter High

0

NHS shows considerable improvement - game played in heavy mist - offense much stronger.

In last quarter Moynihan ripped off runs of 40 and 20 yds.

Elliott was outstanding in line.

Exeter's farthest penetration was NHS 40.

Goals

TD - Baterson 2 (14 & 25 yd. runs)  
- TD - Erickson 2 Moynihan 1 (7 yd. run)

10/14

NHS

6

@ Nashua

13

Locals meet 1<sup>st</sup> defeat in rough contest. 55 yd. punt return by Nashua's Cassista upsets NHS.

Game continuously interrupted by disputes with the officials.

NHS scored 3 min. into the 1<sup>st</sup> quarter on a TD by Moynihan featuring consistent rushing. Nashua tied it up in 1<sup>st</sup> period.

Npt. completed several passes in 2<sup>nd</sup> half but most of time called back for some infraction.

TD - Moynihan 1 (rush)

10/21

NHS

46

Essex Aggies

7

Locals roll up big score - NHS improving all the time.

NHS completed several passes mostly to Elliott & Erickson.

Erickson, Kelley, Moynihan & Weir ran wild.

TD - Weir 3

Erickson 3

Moynihan 1

Goals - TD

Erickson 3

Elliott 1

(Continued)

1928

10/28

NHS

0

@ Laurence

25

Meet first strong team this year & were not outclassed as much as score appears.

In fact, they outplayed Law. in 1<sup>st</sup> half. A blocked Mpt. punt gave Law. a TD in last few minutes of half.

NHS was handicapped -

Moynihan was ineligible for game.

Weir failed to show up.

2<sup>nd</sup> half all Laurence. Kelly got hurt & didn't play in 2<sup>nd</sup> half.

11/4

NHS

6

Salem

0

2,000 fans watch locals trim old rivals in 1 of best games ever seen here.

Team finds place in NHS Hall of Fame as they are the 3<sup>rd</sup> NHS team to defeat Salem. Last victory was 1915.

NHS scored in last quarter taking ball from midfield to Salem 15. Erickson then ran around RE w/ beautiful interference for the winning TD.

Grover, Nock & Mason impregnable in line.

Moynihan & Erickson made long gains around ends.

NHS rosters marched from High School to field led by the Moose Band. After the big victory they snaked dance thru downtown complete with red flares.

TD - Erickson 1 (15 yds. end run)

NOTE -

Nock is 1 of the best centers in years at NHS.

(Over)

(279)

1922

11/11

NHS 36 Brewster Free Academy 0

No match for local high school - the cheering section is the best in years.

Foe had defeated a strong Tilton Seminary team but against NHS lacked pep & fight. NHS excelled on defense.

Game featured open field running of Moynihan and Erickson.

Elliott caught several passes from Erickson. Grover & Mason opened many holes.

20-0 at halftime.

|                       |               |                     |
|-----------------------|---------------|---------------------|
| Goal                  | TD - Moynihan | 2                   |
| -TD - Erickson        | Weir          | 1                   |
| (dropkicks)           | Regan         | 1                   |
|                       | Erickson      | 1 (28 yds. end run) |
| Field Goal - Erickson | 1             |                     |

11/18

NHS 19 @ Portsmouth 0

Npt. in brilliant game - large crowd - score in every period but 1st.

1st TD - 50 yds. punt runback by Erickson.

2nd TD - short plunge by Weir after a steady 35 yds. march.

3rd TD - result of 2 finely executed Erickson to Elliott (35 yds.) forward passes - Carver scoring the TD.

Only 11 NHS players were used - must be in good condition.

|               |                         |
|---------------|-------------------------|
| TD - Erickson | 1 (50 yds. punt return) |
| Weir          | 1 (rush)                |
| Carver        | 1 (pass from Erickson)  |

Goal - Erickson 1  
-TD

(280)

(Continued)



11/25

NHS

44

1922

Danvers

0

Locals outclass D - pile up 44-0  
score with ease - pile up 30-0 lead in 1st half.

Cold wind swept field causing frequent fumbles - 3 D fumbles put NHS in scoring position each <sup>time</sup>.

Defense strong except being fooled once in awhile on a delayed pass.

3 TD's scored on forward passes.

Most spectacular pass was in closing seconds of 1st half - a TD pass from "Husky" Arnold to Perkins who collided with goal posts.

3rd was a long pass Erickson to Kelley. Johnson picked up a D fumble & raced for a TD.

|                      |                              |
|----------------------|------------------------------|
| Goals - TD           | TD - Weir 2 (rush)           |
| Elliott 1 (dropkick) | Perkins 1 (pass - Arnold)    |
| Erickson 1           | Erickson 1 (rush)            |
| (pass - Moynihan)    | J. Johnson 1 (ran w/ fumble) |
|                      | Kelley 1 (pass - Erickson)   |
|                      | Carver 1 (pass - Erickson)   |

Thanks.  
11/30

NHS

79

Gloucester

0

Walk away with Glouc. - roll up biggest score in a long time.

A rare occasion when Npt. back was stopped for no gain.

Visitors lack speed & knowledge of game.

"Lemons" Hilton received a brain concussion - 1st time this season a player left game w/ injuries.

Bill Elliott never played better.

Kelley big star with 4 TD's.

Mason, Strouer & Nock played well.

NHS scored 2 TD's in first 3 minutes.

TD - Kelley 4, Elliott 2, Weir 2  
Strouer 1, Mason 1, Erickson 1, Carver 1

Goals - TD -

Erickson 7

(Ten)

(281)

1922

John W. Ryan Cup won by Fred Carver.

Scoring - 1922

|                 | <u>TD</u> | <u>Goals<br/>- TD</u> | <u>FG</u> | <u>Total<br/>Pts.</u> |
|-----------------|-----------|-----------------------|-----------|-----------------------|
| "Jack" Erickson | 8         | 17                    | 1         | 68                    |
| Hugh Weir       | 7         |                       |           | 54                    |
| Art Moynihan    | 5         |                       |           | 30                    |
| Edward Kelley   | 5         |                       |           | 30                    |
| Fred Carver     | 3         |                       |           | 18                    |
| Wm. Elliott     | 2         | 2                     |           | 14                    |
| Allen Oaterson  | 2         |                       |           | 12                    |
| Edward Mason    | 1         |                       |           | 6                     |
| Jack Johnson    | 1         |                       |           | 6                     |
| Albert Perkins  | 1         |                       |           | 6                     |
| Edward Regan    | 1         |                       |           | 6                     |
| Everett Grover  | 1         |                       |           | 6                     |
|                 | <u>39</u> | <u>19</u>             | <u>1</u>  | <u>256</u>            |

Coach - Starr M. King (Mass. Aggie)  
 Capt. - Rupert Nock  
 Mgr. - Wm. Thomas

Looses

|           |     |                           |    |
|-----------|-----|---------------------------|----|
| NHS       | 4   | Wakefield                 | 0  |
|           | 12  | Exeter High               | 0  |
|           | • 4 | @ Bunchard, Andover       | 9  |
|           | 24  | Natick                    | 6  |
| (Forfeit) | • 0 | Lawrence                  | 1  |
|           | 41  | Dartmouth                 | 0  |
|           | 28  | Worcester North           | 0  |
| (Tie)     | 4   | @ Salem                   | 4  |
|           |     | Nashua (Cancelled - Rain) |    |
|           | 20  | Pittsfield, Ma.           | 0  |
|           | 145 | Won 4 Lost 2 T 1          | 22 |

### NOTES -

Charles Avery is back in school but can't overcome the 3 mos. attendance rule & be eligible to play.  
 Art Maynham has transferred to St. James.  
 Bill Elliott & Fred Carver are attending Dartmouth.  
 Another 10 x 20 ft. building is being built at the High School Field for use by the visiting team.  
 Still waiting for Water to be installed at HS Field.  
 "Little Wonder Team of '23"

### Roster -

|     |                      |                |                  |
|-----|----------------------|----------------|------------------|
| LE  | Stuart Silloway      | Jack Johnson   | Sam Traister     |
| LT  | Frederick Sullivan   | Harold Barrett | Hermann Carver   |
| LG  | Everett "Tub" Grover | Donald Page    | Robert Lucy      |
| C   | Rupert "Laddie" Nock | Deron Glavin   | John Nutter      |
| RG  | Fred Bartlett        | Alfred Knight  | Arthur Rose      |
| RT  | Edward Keger         | Thomas Marnay  | Markwell Trebach |
| RE  | Edward Erickson      | Charlie Arnold | Daniel Townes    |
| QB  | Lionel Collis        | Joseph Casey   | Charles Kelleher |
| LHB | Edward Kelley        | James Curley   | Robert Kimball   |
| RHB | Hugh "Uglie" Weir    | Howard Hann    | J. Knight        |
| FB  | Herbert Trumbull     | (Over)         | (283)            |

-1923

9/29

NHS 6

Wakefield

0

Locals win opener - outtricked & outplayed heavier opponents - particularly in first 3 periods.

Only score came in 2nd period when Trumbull scored from 5 yd. line.

NHS committed 2 costly fumbles - 1 on opponents 5 & other on 20.

Trumbull was the star w/ his strong running. Nock, Kelley, Murray & Bartlett showed up well.

TD - Trumbull 1 (5 yd. run)

10/6

NHS 12

Essex High

0

NHS beats Essex for 3rd straight time in a defensive game featuring excellent punting.

Game played in perfect weather w/ high wind. Weir scored both TD's.

Nock, Grover & Silloway opened up many holes. Locals waited for breaks - took advantage.

TD - Weir 2 (rush)

10/12

NHS 6

@ Bunchard

9

Locals display no push, no drive, no fight in 1st loss. Large crowd follows team.

Johnson, QB, was Npt's best player - caught several passes from Arnold.

Line displays ragged play.

NHS went ahead 6-3 in 2nd period on straight football w/ Johnson scoring.

Winning Bunchard TD came when Kelley fumbled punt on Npt. 4 - Conte scooped it up & scored.

TD - Johnson 1 (rush)

10/20

NHS

24

1923

Natick

6

Steam roller football, coupled with superb generalship & a magnificent defense results in 1<sup>st</sup> Natick defeat of year.

Avenge Ounchard defeat.

Only 12 men used - all starred.

Weir, Kelley & Trumbull ran wild.

Sullivan recovered fumble for 1<sup>st</sup> TD.

Whole line played well.

TD - Kelley 2 (rush)

PAT

- Kelley 2

Sullivan 1 (recovered fumble  
in end zone)

Weir 1 (4 yds. run)

"The decisive win will shut up some of the wise prophets especially the 'I'm with you if you win' kind."

10/27

NHS (Forfeited) Lawrence

Won

Lawrence gets game by Forfeit. For 1<sup>st</sup> time in history of NHS football, locals forfeit a game.

Largest crowd in many years sees anything but a peaceful struggle.

The cause - McCarthy of Law. twisted the ball out of Trumbull's hands after whistle had blown & raced 60 yds. for a TD.

Ref. Martinson refused to allow this & Law. crowd surged on field - this delayed game for 1/2 hour.

Coach Devlin would not accept Coach King's plea to shorten periods because of approaching darkness & game was Forfeited at end of 3<sup>rd</sup> period.

Ref. Martinson was assaulted by a Law. man - much money was being bet - 10 to 5 odds favoring Law. Law. & Npt. relations in future are finished.

(Over)

285



1923

11/3

NHS 41

Portsmouth

0

Locals score at will after 1<sup>st</sup> half.

- score 34 pts. in last period.

Powerful rushing attack too much for Ports.

Ports. in poor condition - out on most every play.

A tight 7-0 game going into last period & then NHS exploded for 34 points to make game a rout.

TD - Keger 2

PAT -

Arnold 1

Kelley 5 (dropkick)

Weir 1

Johnson 1

Kelley 1

11/10

NHS 28

Worcester North

0

Locals win but fail to show any brilliant work - played 1 of worst games of year.

Ragged tackling & weak offense.

Kelley (defense) & Keger (offense) were particularly outstanding.

Worcester heavy & slow.

1 NHS TD was on a blocked punt by Nock. Arnold suffered a twisted leg.

TD - Kelley 1 (17 yd. run)

PAT -

Keger 1 (1 yd. run)

Kelley 1 } dropkick

Trumbull 1 (6 yd. run)

Trumbull 1 }

Nock 1 (Blocked Kick)

Safety - Worcester North

286

(Continued)

1923

11/17

NHS 6

@ Salem

6

Huge rally at City Hall night before game. Special train of fans to Salem Sat.

NHS ties old rival - outplays them before a mob of 7,000 at Bertram Field. Hand-fought contest.

NHS did not succeed in bringing home a Witch's scalp but pulled out several hairs.

Npt. spoils Chancer with penalty when ball was nearly on goal line - another occasion ball lost on downs at 1.

Salem scores in 1st period on 8 yd. pass.

In same period NHS got biggest break of game. Kelley picked up a fumble & raced 72 yds. for a TD escorted by 4 W blockers. - 2nd longest run ever on Bertram Field.

NHS used only 11 iron men.  
Neptune Drum Corps entertained.

TD - Kelley 1 (72 yd. run w/ fumble)

Thanks  
11/29

NHS 20

Pittsfield, Mass.

0

Locals end glorious season by trimming undefeated Berkshires Champions.

Perfect weather - huge crowd - NHS plays straight football - footing slippery.

Whole team played well.

NHS held visitors on 3 inch line.

Locals score twice in 1st period to salt game away.

Students marched to & from field to High School led by Neptune Five & Drum Corps.

TD - Weir 1 (1 yd. rush)

Arnold 1 (1 yd. rush)

PAT -

Kelley 2 (dropkick)

Kelley 1

(16 yd. run)

(Over)

(287)

1923.

Scoring - 1923

|                        | <u>TD</u> | <u>PAT</u> | <u>Total</u><br><u>pts.</u> |
|------------------------|-----------|------------|-----------------------------|
| Edward Kelley          | 4         | 10         | 46                          |
| Hugh "Ughie" Weir      | 5         |            | 30                          |
| Edward Reper           | 3         |            | 18                          |
| Herb "Bunkie" Trumbull | 2         | 1          | 13                          |
| Jack Johnson           | 2         |            | 12                          |
| Charlie Arnold         | 2         |            | 12                          |
| Frederick Sullivan     | 1         |            | 6                           |
| Rupert "Laddie" Mack   | 1         |            | 6                           |
|                        | 22        | 11         | 143                         |

\* Safety in Wisc. No. game + 2 \*  
145

Comments

American Yacht Club hosts Coach King & squad to a post season Turkey Dinner.

\$2,000 athletic profit for football season.

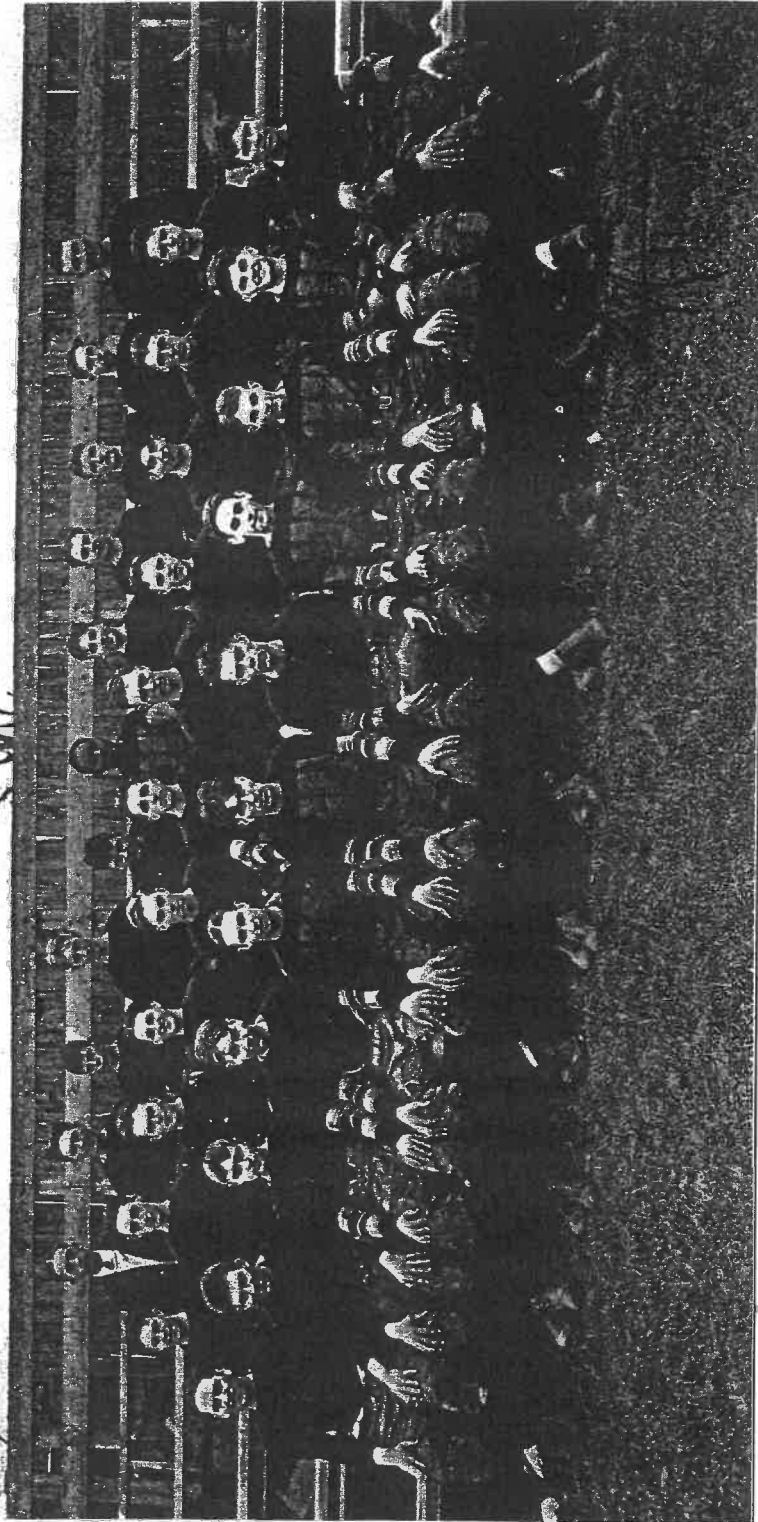
Edward J. Kelley wins coveted Jack Ryan Cup.

Another 10 x 20' building is being built at South End High School Field for use by Visiting team.

Still waiting for installation of Water at HS Field.

George "Mose" Avery is back in school but can't overcome the 3 month attendance rule to be eligible to play.

Bill Elliott & Fred Carver are attending Dartmouth.



# FOOTBALL SQUAD OF 1923

BACK ROW:—Thomas, Mgr., Trebach, Collis, Barrett, Nutter, Townes, C. Kelleher, Curley, Lucey, Dow, Coach King.  
 SECOND ROW:—Murray, Knight, Rose, Traister, Tobey, Bartlett, Page, Casey, Gulazian, Hann, Kimball.  
 FRONT ROW:—Weir, Kezer, Grover, Silloway, Trumbull, Kelley, Capt. Nock, Erickson, Arnold, Johnson, Sullivan.

200



• Losses

Coach - Charles E. Stewart Asst. - Tim Herlihy

Capt. - Everett Grover

Mgr. - George Knight

|       |     |                   |     |
|-------|-----|-------------------|-----|
| NHS   | • 3 | Marblehead        | 27  |
|       | • 0 | Cambridge Latin   | 2   |
| (Tie) | 7   | Bunchard, Andover | 7   |
|       | 13  | @ Beverly         | 0   |
|       | 27  | Worcester South   | 6   |
|       | 13  | @ Portsmouth      | 6   |
|       | 14  | Rochester, N.H.   | 6   |
| •     | 6   | Salem             | 31  |
| •     | 0   | Nashua            | 12  |
| •     | 0   | @ Peabody         | 6   |
|       | 83  |                   | 103 |

Won 4 Lost 5 T 1

NOTES -

Charles Kelleher awarded Ryan Cup.

Starr King - Coaching at Rutgers Prep.

Cheer Leaders - Shirley Martin, Marion LandfordRoster :-

|     |                           |                  |              |
|-----|---------------------------|------------------|--------------|
| RE  | Thomas Murray             | Raymond Coore    | Sam Traister |
| RT  | Fred Bartlett             | Abraham Trebach  | Max Trebach  |
| RG  | Robert Kimball            |                  |              |
| E   | Deron Gulagian            |                  |              |
| LG  | Everett Grover            | Charles Warwick  |              |
| LT  | Donald Oage               |                  |              |
| LE  | Robert "Bo" Lucy          | Daniel Townes    |              |
| QB  | Lionel Collis             | Joseph Casey     |              |
| RHB | Herbert "Bunkie" Trumbull | Charlie Kelleher |              |
| LHB | Howard Hann               | James Curley     |              |
| FB  | Edward "Ted" Rezer        | Wm. Lynch        |              |

(Over)

1924

9/27

NHS

3

Marblehead

27

NHS badly outplayed in opening loss - lucky it wasn't double the score the way the locals played.

1 of biggest crowds ever see game.

Only 3 regulars return from last year's eleven - rest of squad green.

1<sup>st</sup> home loss since 1921.

Gulagian & Bage played hard & well. Npts. only score came in 2<sup>nd</sup> period on a 27 yd. FG by Herb Trumbull.

20-3 at half.

FG - Trumbull 1 (27 yd. dropkick)

10/4

NHS

0

Cambridge Latin

2

Locals show big improvement.

Loss game in last minute as bad pass from center allows Trumbull to be tackled in end zone for a safety.

Deserved to win - they played real football - tackled hard.

Bage & M. Trebach piled up everything at the tackle position - Grove & Kimball did well. Trumbull, old self, but line hard.

10/11

NHS

7

Bunchard

7

Locals avert defeat, salvage tie when

Kimball blocked a last minute Bunchard punt from their 19 & Tommy Murray recovered in end zone for a TD. Murray then kicked tying point.

Npts. put up a poor exhibition.

Bunchard lost another TD by fumbling on N9.

TD - Murray 1 (recovered blocked kick in end zone)

N

P

Rushing  
Passing

74

56

117

112

PAT - Murray 1

(Continued)

(291)

• Losses

Coach - Herbert "Zip" Harrington Asst. - Arthur Davis (UNH)  
 Capt. - Daniel Connors  
 Mgr. - Berley Coffin

|         |                 |     |
|---------|-----------------|-----|
| NHS • 0 | Cambridge Latin | 6   |
| 12      | @ Portsmouth    | 0   |
| 27      | Dover           | 0   |
| • 6     | @ Beverly       | 16  |
| • 0     | Gloucester      | 27  |
| • 13    | Marblehead      | 23  |
| • 13    | @ Methuen       | 20  |
| (Tie) 0 | Funchard        | 0   |
| • 0     | Reading         | 6   |
| • 0     | Amesbury        | 27  |
| 71      |                 | 125 |

Won 2 Lost 7 T 1

## NOTES -

Cheerleaders - Raymond Bamford, Betty Bowman  
 & Aileen Dudley.

NHS players identified w/ crimson letters on  
 new grey jerseys.

Jack Erickson (All Maine) QB at Colby, Eddie Erick -  
 son QB at Bates. Normie Dondoro - 2<sup>nd</sup> yr at Kent's Hill.

## Roster :-

|     |                         |                       |                 |
|-----|-------------------------|-----------------------|-----------------|
| LE  | Daniel Connors          | Raymond Corey         | Donald Gage     |
| LT  | Lester "Nunker" Cole    | Arthur Tufts          | Maurice Whalen  |
| LG  | Whitfield Kimball       | Norman Beane          | Robert Hughes   |
| C   | Leo Gulagian            | George Bruce          | Kenneth Cousins |
| RG  | Henry Diamond           | Samuel C. Warwick     | Whit Avery      |
| RT  | Donald Berry            | Joseph Skovron        | Joe Murray      |
| RE  | Joseph Lyons            | Ernest "Tub" Mitchell | Robert Fogg     |
| QB  | Henry Graft             | Leo Ananian           | Leonel Callie   |
| LHB | John Edwards            | Vaskie Ananian        | John Brooks     |
| RHB | Bernie Laybio           | Charles Tranter       | Wm. Ogden       |
| FB  | Harold "Gramp" Erickson |                       |                 |

(Over)

1926

10/2

NHS 0 Cambridge Latin 6  
(Coach Leander McDonald)

Good showing in opener - lose 6-0 after a fine exhibition.

Outweighed - only 1 man in NHS line (Capt. Connors) had played a full season.

Over anxiousness lost game - 2 15 yard penalties for roughing passer put Camb. in position to score on Npt. 4 & on 4th down Latin scored.

Les Gulagian played whale of a game - Kimball, Connors & Lyons (punting) played well. NHS weak against the pass.

10/9

NHS 12 Portsmouth 0

Robert Fogg eligible to punt in this game - difference in eligibility rule in Mass. & N.H.

\* NHS shakes jinx - 1st Victory in 15 games. Finally cross opponents goal & score TD.  
Capt. Connors in hospital.

NHS all line plunging & end runs - No passes.

NHS scored 1st TD in 2nd Quarter after gains by Traister & Collins to the 1 where QB Graf scored.

2nd TD was set up by punting of Fogg & a fumble recovery by Gulagian at the Ports. 8 - Traister carried it to the 2 where Graf scored again.

Npt. used but 3 plays all during game -

1 was a punt

Another a place kick

2 others - a tackle & guard smash

That's all that was necessary.

TD - Graf 2 (1 & 2 yds. rushes)

(302)

(Continued)

10/12

NHS 27

1926

Dover

0

2<sup>nd</sup> victory for locals - contest full of sensational plays. 3,000 fans look on.

Straight line plunging in opening minutes brought 1<sup>st</sup> TD with Collis scoring.

2<sup>nd</sup> TD - blocked kick by "Spike" Collis with Cory falling on ball for TD.

3<sup>rd</sup> TD - rushing attack of 9 players gained 39 yds. - Graf scoring.

4<sup>th</sup> TD - "Lramp" Erickson reeled off a sensational 67 yd. TD run.

Collis had runs of 49 & 19 yds.

Dover - big but slow.

TD - Collis 1 (rush)

PAT -

Cory 1 (recov. blocked kick)

Erickson 3

Graf 1 (rush)

(placement)

Erickson 1 (67 yd. run)

10/16

NHS

6

@ Beverly

16

16 pt. rally in 4<sup>th</sup> period by Bev. too much for locals. Npt. led 6-0 'til then.

For nearly 3 quarters NHS outplayed & out-fought Beverly.

Weak punting put NHS in several holes. Penalties also hurt locals in final quarter - also difficulties with the timer.

NHS scored in 2<sup>nd</sup> quarter after Collis recovered a Bev. fumble at their 25. A 13 yd. Chris Cross play with Erickson carrying to 1 where "Henny" Graf scored.

Kimball was outstanding at guard.

TD - Graf 1 (1 yd. rush)

(Over)

(303)



10/23

NHS

0

Gloucester

27

Crippled NHS team outplayed at every point - no match for opponents. Outweighed, outplayed & outclassed. 4 regulars out w/ injuries.

NHS played best in 1st period holding Glouc. scoreless.

7-0 at half but team collapsed in 2nd half. Interference & punting weak.

10/30

NHS

13

Marblehead

23

Many subs in line - brilliant battle waged in vain - again, 4 regulars out injured. Erickson - broken hand, Kimball - broken finger. Perhaps most sensational gridiron battle waged in this city.

Outstanding play of game - a sensational 72 yd. TD run in 3rd period by Johnny Edwards, little 119 lb. halfback. Edwards merely out-runs opponents, 4 rushes for 125 yds.

Collis had a sensational 45 yd. kickoff return to open 2nd half.

NHS scored in 1st 2 minutes when Connors recovered fumble at M 35 - Edwards ran ball to 1 ft. line - Collis banged it over.

many subs used because of injuries.

PAT -

Erickson 1 (place)

TD - Collis 1 (1 yd. rush)

Edwards 1 (72 yd. run)

Comment -

Forward Pass was first introduced at a meeting of the American Intercollegiate Rules Committee in 1906.

Not until several years later was it used to any extent.

(Continued)

1926

11/16

NHS 13

@ Methuen

20

Methuen underestimated - lose to team they confidently expected to beat.

NHS showed splendid aerial attack but no rushing game. Failed to stop Meth. rushing attack.

Collis was the outstanding player on the field - had a sensational day passing.

1<sup>st</sup> TD - 10 yd. pass to "Slicker" Corey. Collis passed to Lyons for PAT to take a 7-6 lead.

2<sup>nd</sup> TD - Joe Lyons remained unnoticed near sideline - Collis heaved a long pass to him for TD.

PAT -

TD - Corey + (pass from Collis)

Lyons + (pass - Collis)

Lyons + (pass from Collis)

11/13

NHS 0

Bunchard

0

NHS show improve, but not enough to win. Have a different lineup every game with all the injuries.

Twice the scrappy locals held Bunchard within inches of their goal.

Work of Collis on defense was highlight of day. Kimball, Erickson & Corey gave fans thrills.

Mental attitude of locals getting better - more fight. Defense terrific - Offense improving.

11/20

NHS 0

Reading

6

Locals drop another - put up good defensive game but offense nothing alarming - Ragged.

Reading was dumb - passed several times deep in their territory while ahead. A Reading back ran 65 yds for an apparent TD but placed ball down 4 yds. from goal. Unable to score.

2<sup>nd</sup> team started game & it was against them that Reading scored in 1<sup>st</sup> period.

(Continued - Over)

(305)

1924

Reading  
(Continued)

11/20

Edwards was only local back to gain yds.

Collis was whole works on defense.

Collis completed a 61 yds pass play to Lyons but he was nailed on Reading 13. injured.  
Kimball, Tufts & Hughes did well - Collis & Erickson

Thomson

11/25

NHS

0

Amesbury

27

Ames. wins in a walk - Npt. never had a chance - stages utter collapse before 7,000.

A Waterloo if there ever was one - tackling, running & everything else in game went Blooey. Team a complete disappointment, 135 yds. Rush & Pass.

NHS got a big break when opening kickoff bounded off an AHS player & Npt. recovered at midfield but locals fumbled ball back.

NHS fumbled 5 times.

Fred Gallagher was sensational for Ames.

The indomitable, spirited "Spike" Collis kicked, passed & ran. Tackling - he was in on almost every play. He was the whole team.

Joe Lyons - concussion of the brain.

Kimball, Gage & Edwards did well.

200 decorated cars from Ames - 2,000 fans.

NHS victorious just twice in last 23 games - nearly 2 1/2 years.

Scoring - 1924

|                         | TD | PAT | Total Pts. |
|-------------------------|----|-----|------------|
| Henry "Henning" Graf    | 4  |     | 24         |
| Lionel "Spike" Collis   | 2  |     | 12         |
| Raymond "Slicker" Corey | 2  |     | 12         |
| Harold "Champ" Erickson | 1  | 4   | 10         |
| Joseph Lyons            | 1  | 1   | 7          |
| John Edwards            | 1  |     | 6          |
|                         | 11 | 5   | 71         |

306

South End Grds.

NHS - 1927

Coach - Herbert "Zip" Harrington

• Losers

Capt. - Raymond Corey

✓ Mgr. - Kenneth Collie

|       |           |                       |           |
|-------|-----------|-----------------------|-----------|
| NHS   | • 0       | Sanborn Seminary      | 6         |
|       | • 13      | Cambridge Latin       | 19        |
|       | • 0       | @ Gloucester          | 7         |
|       | 39        | Exeter High           | 0         |
|       | • 0       | Bridgeton Acad., Me.  | 32        |
| (Tie) | 6         | @ Pynchard, Andover   | 6         |
|       | • 7       | @ Marblehead          | 27        |
|       | 19        | Manchester West, N.H. | 0         |
|       | 2         | East Providence, R.I. | 0         |
|       | <u>84</u> |                       | <u>97</u> |

Won 3 Lost 5 Tied 1

### Comments:-

Around 50 report for Football.

Fredolie Carver - Head Coach at Lebanon, N.H.

Lionel "Spike" Collie a candidate for Football at Chestnut Hill Academy, Philadelphia.

Bernie Loykie - punctured kidney - out for season.

### Roster:-

✓ Letters & Sweaters

|     |                           |                        |                       |
|-----|---------------------------|------------------------|-----------------------|
| LE  | ✓ Raymond "Slicker" Corey | Nelson Lloyd           | Wm. "Bill" Brown      |
| LT  | Wm. "Bill" Bentley        | Charlie Whalen         | ✓ John "Jack" Fenders |
| LG  | ✓ Whitfield Kimball       | ✓ Lester "Humber" Cole | ✓ Robert Morse        |
| C   | Leo Gulagian              | Frank Graf             | ✓ Wm. "Billie" Graf   |
| RG  | ✓ Arthur Tufts            | ✓ Leonard Blakely      | ✓ Maurice Whalen      |
| RT  | Donald Perry              | ✓ Harlan Fowle         | Art Twomey            |
| RE  | ✓ Daniel Connors          | ✓ Joseph Murray        | Robert Fagg           |
| QB  | ✓ Leo Ananiam             | Thomas Roney           | Edward Coffin         |
| LHB | ✓ Wm. "Bill" Ogden        | ✓ Charlie Tranter      | Bert Noyes            |
| RHB | ✓ Vaskie Ananiam          | ✓ Joe Gallagher        | Ed "Igg" Brown        |
| FB  | ✓ Robert Hughes           | ✓ Whitney Avery        |                       |

(307)

(Over)



9/24

NHS

O

Sanborn Seminary

6

1927

Drop opener - injury list grows - beaten by a bulky but not overmanned Sanborn team.

Bad pass from center by Gulagian does trick in 2<sup>nd</sup> period. Ball goes over punter's head and Sanborn gets ball on NHS 20 - Sanborn later scored on a 7 yds pass play.

3 players injured - Bill Bentley (injured leg), Whit Kimball (dislocated shoulder), Bob Hughes (2 damaged knees). Team looked better than usual in opener.

Shame same players can't play in Mass. games. Kimball, Gulagian, Berry & Bentley played well.

### 9 Players Quit NHS Squad

Because of studies or lack of study the following will not be able to participate -

Bentley, Berry, Leo Ananian, Vaskie Ananian, Traister, Noyes, Cole, Avery & Leo Gulagian.

NHS Athletic Council ruled that the players cannot even participate in the N.H. games - thus they quit.

The Athletic Council later rescinded this rule.

### NHS Suspended by Mass. State H.S. Assn.

Following the Sanborn game the Mass. Headmaster's Assn. investigated the status of NHS players participating in the game. It was alleged NHS used ineligible players who were down in their studies.

NHS opposed rule that School Board schedule games instead of the Principal - as a result NHS was suspended.

The squad was cut down to 18 men - injuries, ineligibility, indifferent attitude & breaking training rules. As a result a completely new lineup had to take the field.

(Continued)



10/1

NHS 13

1927

Cambridge Latin

19

Locals fight hard - overpowered by sheer weight - show indomitable grit & spirit. Game played in terrific heat.

Officials off color & several wrangles occurred - stormed around Referee Norton when game was over.

1 Camb. TD was scored on a pass when passer appeared to be over line of scrimmage.

Norton also threw Ogdon out of game.

NHS was penalized 5 yds for having 2 successive passes incomplete when actually there was a running play in between passes.

NHS 1<sup>st</sup> score came in 1<sup>st</sup> period when Connors tackled CL back so hard he fumbled - Connors picked ball up & scored.

Whit Avery was the best NHS player.

2<sup>nd</sup> TD - pass Avery to Gallagher for 20 yds. brought ball to 20. Connors ran 17 yds on end - around play to CL 1 - Bill Ogden scored.

TD - Connors 1 (ran 5 yds w/ fumble)

PAT -

Gallagher 1 (place)

Ogden 1 (1 yds. plunge)

10/8

NHS 0

@ Gloucester

7

Simple Criss-Cross play catches NHS napping in GL. victory - hard fought, rough game.

NHS weakness was in line.

Locals made mighty drive in final minutes that was stopped within inches of GL. goal.

Avery passed well to Gallagher several times - NHS completed 2/15 passes.

Avery, Blakely, 14-yr. old Frank Graf & Ogden played well.

Officials overlooked dirty tactics of Glouc. - 3 NHS players incapacitated.

Team rode to game in Bouton's "Miss Mpt" party bus. (over)

(309)

1927

10/12

NHS 39 Exeter High

0

Brilliant work by local 11 - best they've looked this season - flashed biggest offensive show seen here in years.

Avery was outstanding star of game with his long & short passing.

Connors made 2 outstanding catches of Avery passes for TD's.

Joe Gallagher pulled off a 30 yd. TD run - Capt. Corey ran 18 yds. for TD on a "reverse end" play. In 4th quarter entire 2nd team went in.

|           |                |                                 |                  |
|-----------|----------------|---------------------------------|------------------|
|           |                | TD - Connors 2 (passes - Avery) |                  |
|           |                | Corey 1                         | (18 yd. run)     |
| PAT -     |                | Avery 1                         | (rush)           |
| Connors 1 | (pass - Avery) | Gallagher 1                     | (30 yd. end run) |
| Corey 1   | (rush)         | Ogden 1                         | (rush)           |
| Ogden 1   | (rush)         |                                 |                  |

10/22

NHS

0

Bridgeton Acad., Me. 32

Locals get hammered by Academy team - heavier & bigger players.

NHS kept fighting & trying to end.

Trickery was 1 of Bridgeton's biggest assets. Uthalen for NHS played a slashing game.

A long run by Capt. Corey was 1 of game's features.

Bridgeton coach younger than many of his players.

1927

10/29

NHS

7

@ Marblehead

27

Lack of team work costs game - occasional showing of individual brilliance.

Until he was hurt (badly injured shoulder) Whit Kimball was the "whole works," Displayed brilliancy with his ball carrying.

QB Leo Ananian scored only TD & once carried ball thru center for 30 yds.

Tackling by Hughes & Corey - pass catching by Connors - Tufts, Whalen & Blakely stood out.

Marb. gained at will around ends.

TD - Leo Ananian 1 (rush)

PAT - Avery 1 (placement)

11/12

NHS

6

@ Bunchard

6

NHS shows flashes & ties Bunchard.

Brilliant work of QB Leo Ananian kept NHS from getting expected defeat.

A brilliant 60 yd. TD run by Ananian thru center of Bunchard line prevents defeat. Traister missed the extra point.

Bunchard heavier & faster but locals played inspired game.

Only 1 sub used - W. Graf went in when Capt. Corey was injured.

Bunchard scored on a 50 yd. march - mostly line plays.

TD - Leo Ananian 1 (60 yd. run)

(Over)

(311)

11/19

NHS 19

1927

Manchester West

0

NHS wins its 1st home game in 3 years - showed individual brilliancy over a fightless & disorganized Manch. team.

Played in blustery, chilly weather.  
0-0 at halftime.

A pass interception at midfield by Connors set up 1st TD - Capt. Corey ran thru tackle, reversed his field & sped 45 yds. for a TD.

Minutes later Traister ran for a 30 yd. TD.

Frank Graf capped the scoring by running 22 yds. for a TD with intercepted pass.

The Annanians & Traister shown on defence.  
Corey, Blakely, Tufts & Whelan performed well.

TD - Corey 1 (45 yds. run)

Traister 1 (30 yds. run)

PAT -

Traister 1 (rush)

Frank Graf 1 (22 yds. w/ interc. pass)

8th NHS victory in 4 years.

Thanks  
11/24

NHS 2

East Providence, R.I.

0

Ends season with victory before 3,000 over a strong visiting team.

Henry Welch, AD at E. Providence - former NHS football players.

5 courageous NHS players hardly able to drag a leg behind them crashed thru E. Prov. line in closing minutes to block a kick that spelled victory.

E. Prov. had stopped Npt. from scoring TD on 1 yds. line - block ensuing kick & Gomes (E. Prov.) fell on it for a safety.

Punting duel - Corey & Gomes.

14 fumbles in game, NHS intercept. 4 passes.

Safety - Gomes (E. Prov. downed blocked punt in end zone)  
(Continued)

(3/2)

1927

Scoring - 1927

|                              | <u>TD</u> | <u>PAT</u> | <u>Totals</u> |
|------------------------------|-----------|------------|---------------|
| Daniel Connors               | 3         | 1          | 19            |
| Wm. "Bill" Ogden             | 2         | 1          | 13            |
| Raymond Corey                | 2         | 1          | 13            |
| Leon Ananian                 | 2         |            | 12            |
| Joseph Gallagher             | 1         | 1          | 7             |
| Whitney Avery                | 1         | 1          | 7             |
| Charlie Traister             | 1         | 1          | 7             |
| Frank Kraf                   | 1         |            | 6             |
|                              | <u>13</u> | <u>6</u>   | <u>84</u>     |
| * S. Providence Safety + 2 * |           |            | <u>86</u>     |

Banquet

"Royal Rosters" give team banquet at City Hall,  
Tues., Dec. 13. Over 300 there.

Speakers -

|                   |             |
|-------------------|-------------|
| Starr M. King     | Malden High |
| Myles Lane        | Dartmouth   |
| Capt. Tom O'Brien | BC          |
| Paddy Creedon     | BC          |
| Capt. Fish Ellis  | Tufts       |

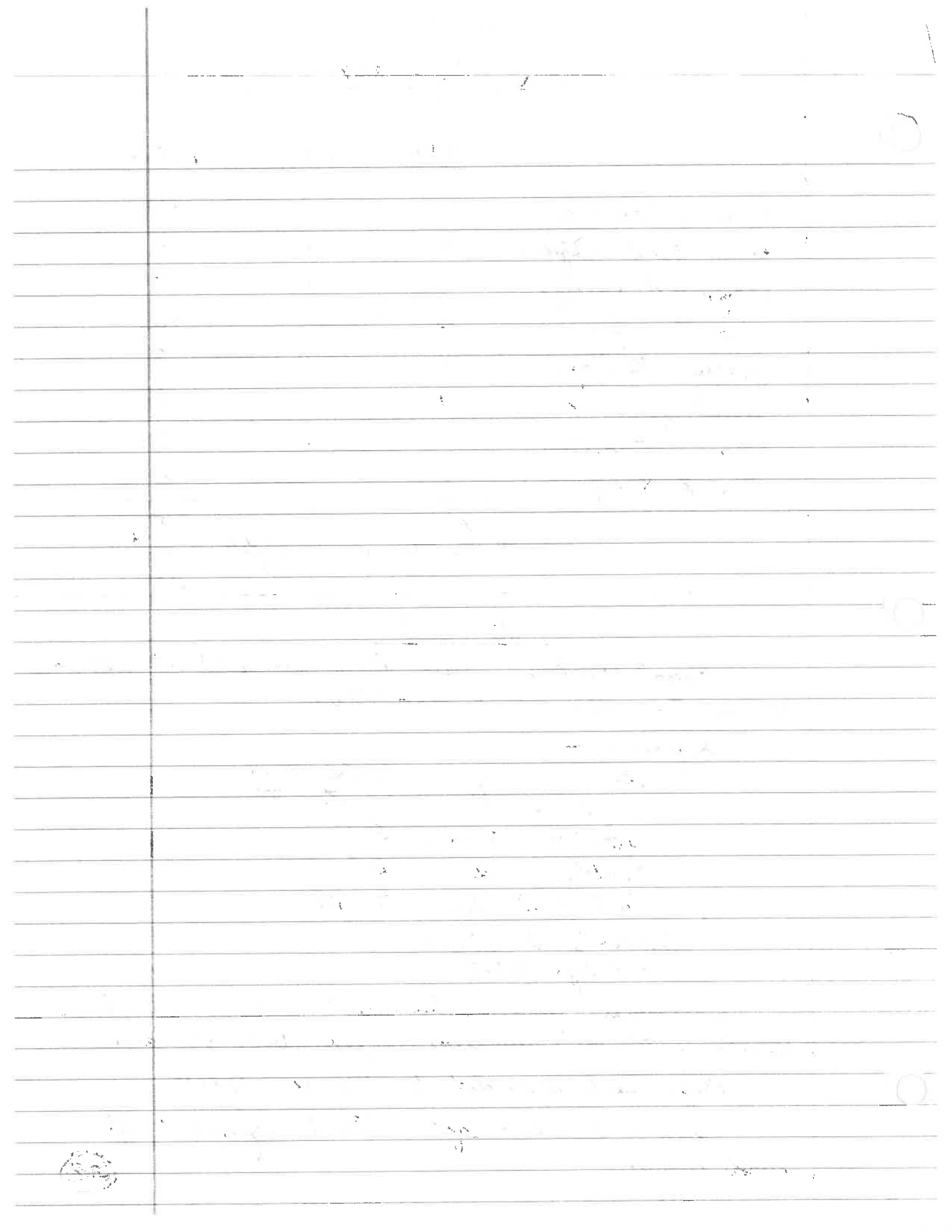
Andrew J. "Bossy" Gillis  
- Mayor elect

Lettermen given Sweaters - also 3 Cheerleaders  
Gertrude Morse, Grisella Langley, Betty Bowman.

Ryan Cup awarded to Bernie Loykin.

1928 - a new Capt. will be appointed for  
each game





NHS Field  
- South End

NHS - 1928

Starr King - Supt. of School

Losses

Coach - Delmar F. Borah Asst. - George Edwards  
Alt. Cpts. - Maurice Whalen  
Whitefield Kimball  
mgr. - Wm. D. Adams

|     |     |                         |    |
|-----|-----|-------------------------|----|
| NHS | 6   | Central Falls, R.I.     | 0  |
|     | 13  | Sanborn Seminary        | 7  |
|     | 24  | Lebanon, N.H.           | 0  |
|     | 6   | Mass. Aggiee 2 Yr. Team | 0  |
|     | 14  | Bostonmouth             | 0  |
|     | 6   | Watertown               | 0  |
|     | 6   | B.C. High               | 7  |
|     | 19  | @ New Bedford           | 0  |
|     | 6   | Cambridge Latin         | 7  |
|     | 0   | @ Salem                 | 13 |
|     | 20  | E. Providence, R.I.     | 0  |
|     | 122 |                         | 34 |
|     |     | Won 8 Lost 3            |    |

### Roster -

|     |                     |                         |                   |
|-----|---------------------|-------------------------|-------------------|
| LE  | Raymond Corey       | Harold Brown            | Anthony Arsenault |
| LT  | Bob Fogg            | Wm. "Bill" Brown        | Raymond Rayno     |
| LG  | Leonard Blakely     | Whitefield Kimball      | Thomas Roney      |
| C   | Edward "Izzy" Brown | Sydney Olucinski        | Daniel Reardon    |
| RG  | Arthur Tufts        | Wm. Bellstin            | James Lyons       |
| RT  | Maurice Whalen      | Harlan "Chick" Fowle    | John Foley        |
| RE  | Robert Hughes       | Nelson Lloyd            | Martin Higgins    |
| QB  | Leon Ananian        | Kenneth "Kempie" Collis | Thayer Fogg       |
| LHB | Charles Traister    | Joseph Gallagher        | Godfrey Torrey    |
| RHB | Edward Coffin       | Fred Graf               | Charles Donahue   |
| FB  | William Ogden       | Vaskin Ananian          | Frank Graf        |
|     | Donald Stevens      | Edward Spalding         | George Randall    |
|     | Edwin Pollard       | Charles Costello        | Daniel Lynch      |
|     | John Murray         | Charles Whalen          | Albert Bruyer     |
|     | Joseph Riley        | Clayton Rogers          |                   |

(Over)

(314)

1928

Pre-Season Chatter -

New uniforms - black & orange - black jerseys w/ orange stripes & stockings to match - brown helmets.

Autos can park inside of NHS Athletic Field for a small fee.

Costs \$110.05 to equip each player.

Capt. Stuart Silloway - ends at Wesleyan.

"Spike" Collins now at Geddie School, Hightstown, N.J.

NHS Football Squad has Training Camp at Ipswich Bluffs.

9/22

NHS

&

Central Falls, R.I.

0

A powerful 52 yd. offensive in 3<sup>rd</sup> period resulted in a TD to win opener in impressive style.

Excellent punting of Bob Fogg kept visitors pinned back.

Visitors had excellent passing attack and should have used it more.

Best looking NHS team since 1923.

Traister & Gallagher were best gro. gainers.

Bill Ogden shone well at defensive FB.

Coffin, probably NHS' fastest back.

Ogden bucked over from 1 for only TD after good running by Gallagher, Traister & O'neirians.

Parade of fans marched from HS to Athletic Field led by Npt. Legion Post Band. Flag raising ceremonies w/ Star King accepting new flag, gift of local Legion Post.

TD - Ogden 1 (1 yd. plunge)

Comments -

Eddie Coffin broke ankle in practice.

Maurice Whalen - badly wrenched knee.

Shower bath at HS Field will be ready Sat.

9/29

NHS 13

1928

Sanborn Seminary 7

Npt. takes advantage of 2 breaks & beats strong Sanborn team, Sanborn led 7-0 at half.

Sanborn took lead on a long TD pass.

In 3rd period a Sanborn back got too close to his punter - blocking the ball - Corey recovered. Ogden crossed goal line on a crashing drive & Fogg place kicked the point to tie the score.

Winning TD was set up when Sanborn fumbled on NHS 11. Leo Ananian picked up the fumble & dashed 99 yds. for winning TD, aided by a good block by Tufts, Traister & Gallagher were leading backs.

PAT - TD - Ogden 1 (1 yd. plunge)  
Fogg 1 (place) Leon Ananian 1 (99 yd. run w/ fumble)

10/4

NHS 26

Lebanon, N.H.

0

Lebanon, coached by Freddie Casper, proves easy for locals - Leon Ananian stars.

Lebanon well-coached but too light.

Leon Ananian scored first 2 TD's - 1 on a spectacular 51 yd. punt return.

Traister ran 9 yds. for 2nd TD & Joe Gallagher ran 11 yds. for final TD.

Some of Fogg's punts traveled 50-55 yds.

TD - Leon Ananian 2 (1 - rush  
1 - 51 yd. punt return)

PAT -

Fogg 2 (places)

Traister 1 (9 yd. run)

Gallagher 1 (11 yd. run)

(3/6)

(Over)

10/12

NHS

6

Mass. Aggies  
& 2 Year Team

0

Blocked punt in 3rd period by Art Tufts paves way for only score. Whit Kimball falls on ball behind goal line.

"Farmers" huge - outweigh Npt. 20 lbs. per man  
Aggies fumble on their own 17 paves way for blocked punt.

Leon Ananian emerged as a triple threat. Visitors never knew what he was going to do.

NHS used only 13 men. Henry Graf - Aggies Capt.  
Hughes & Harold Brown performed well.

TD - Kimball 1 (recovered blocked punt.)  
behind goal line

### Del Borah

Borah coached Sanborn Seminary. He lost only 1 game in 1926 season & that to Lexington which was the first game.

Borah then coached at Fairhaven High for 2 years & had 17 consecutive victories.

From Fairhaven he came to Npt. in 1928 where he has reeled off 4 victories giving him 21 straight victories.

Borah denies rumors he will leave Npt.

10/20

NHS

14

Portsmouth

0

Wins 5th straight before 3,000 - Ports. proves easy  
Wrong selection of plays keeps score down.  
Ports. lost more yds. rushing than it gained.  
Traister scored in 2nd per. on a pass from Ogden.  
Leon Ananian dove thru middle for 2nd TD.  
Traister ejected from game. NHS defense best in decade

TD - Traister 1 (pass - Ogden)

Leon Ananian 1 (rush)

(Continued)

PAT -

Fogg 2 (place)

(317)



1928

10/27

NHS

6

Watertown

0

Fast visiting 11 6<sup>th</sup> team to fall before 3,500

Blocked punt by Bob Fagg in 2<sup>nd</sup> period paves way for only score. Blocked on 9 yds. line - Fagg retrieves bouncing ball & runs into end zone.

Leon Ananian dashed 89 yds. for a TD with a fumble only to have ball brought back for a penalty for clipping.

Glucinski impressed with his line play. Watertown proved as strong as reported.

TD - Bob Fagg 1 (9 yds. run with his own blocked punt)

11/3

NHS

6

BC High

7

Angry fans storm field in protest - officials escorted from Stadium by police as result of decision in BC High 7-6 victory.

3,500 enraged rainy day fans see game marked by most flagrant & gross incompetency on part of officials. 2,000 remained & stormed field.

NHS outplayed the masterful & much bigger Catholic school 11 only to be robbed.

Visitors retained ball in 4<sup>th</sup> period when on 2 occasions they were allowed more than the "legal 4 downs".

Also failed to penalize BCH for throwing 2 unsuccessful passes in a row.

White Kimball blocked BC punt on their 9 in 3<sup>rd</sup> period & fell on it for the TD. Fagg missed the extra pt. which would prove costly.

BC won the game in the 4<sup>th</sup> period when a long pass brought ball to NHS 6. Then followed the controversy - 5 downs instead of 4, a questionable "roughing the passer" call etc.

TD - Kimball 1 (blocked punt on 9 & recov. in end zone)

(Over)

1928

11/10

NHS 19 @ New Bedford

0

times

Easily wins - Leon Ananian scores 3

Ran almost at will thru Whalers -

present best offensive display of season.

Lateral pass worked to perfection by locals.

Ananian scored in 1<sup>st</sup>, 2<sup>nd</sup> & 3<sup>rd</sup> periods -

Last TD was a 24 yds. run.

Setting up 2<sup>nd</sup> TD was a 22 yds run by  
Gallagher on a lateral pass.

PAT -

Fogg 1 (place)

TD - Leon Ananian 3

(1 - rush  
1 - 5 yds. run  
1 - 24 yds. run)

11/17

NHS 6 Cambridge Latin 7

Npt. shows effect of strenuous schedule  
before 3,000 - 5<sup>th</sup> year in succession boys  
from University City trim NHS.

A ragged & worn NHS team took field  
Sat. - heavy feet & tired bodies.

Backs were slow - but Joe Gallagher  
shined better than ever.

Might have been over-confidence that beat Npt  
No team has gained as much as Camb. team.

NHS scored early in 1<sup>st</sup> period as Joe  
Gallagher waltzed 16 yds. for TD. Fogg missed  
the crucial extra pt.

The winning TD for CL came in 3<sup>rd</sup> per.  
like a bolt from the blue. An attempted NHS lateral  
was picked off by end Katz at the NHS 32 & he  
proceeded to dash 32 yds. for the tying TD. QB  
McDonald then place kicked the winning pt.

H. Brown, Gallagher & Traister starred.

TD - Gallagher 1 (16 yds. run)

(Continued)

1928

11/24

NHS

0

@ Salem

13

NHS loses hard-fought contest - Coach Borah proud of team's showing.

Make plucky stand against Bill Broderick's mighty Salem 11-10,000 fans.

Outweighed, outplayed but not outfought. 1st period a punting duel - scoreless. Fagg's kicking was spectacular - 3 punts over 40 yards.

Salem scored in 2nd & 4th periods.

Gallagher ripped off an 18 yd. run.

Kimball, Blakely & Tufts played well in center of line, Fagg & Uthalen in on many plays.

Npt's. light backs never had a chance to get going on a slippery field.

"Kewpie" Collis, out with injuries, ran the team for the 1st time & did well.

T. Hankins

11/28

NHS

20

East Providence, R.I.

0

Visitors no match - win 8th game.

A withering line attack blasted visitors wide open from end to end.

Outplayed East Prov. so much that 30 youngsters got chance to play & get muddy.

"Kewpie" Collis scored first 2 TD's on short line plays - 2nd TD set up by M. Uthalen fumble recovery.

3rd TD drive started at NHS 49 - Traister starring with Leon Ananian scoring.

TD - Collis 2 (rush)

Leon Ananian 1 (rush)

PAT -

Fagg 2 (places)

(Over)

390

1928

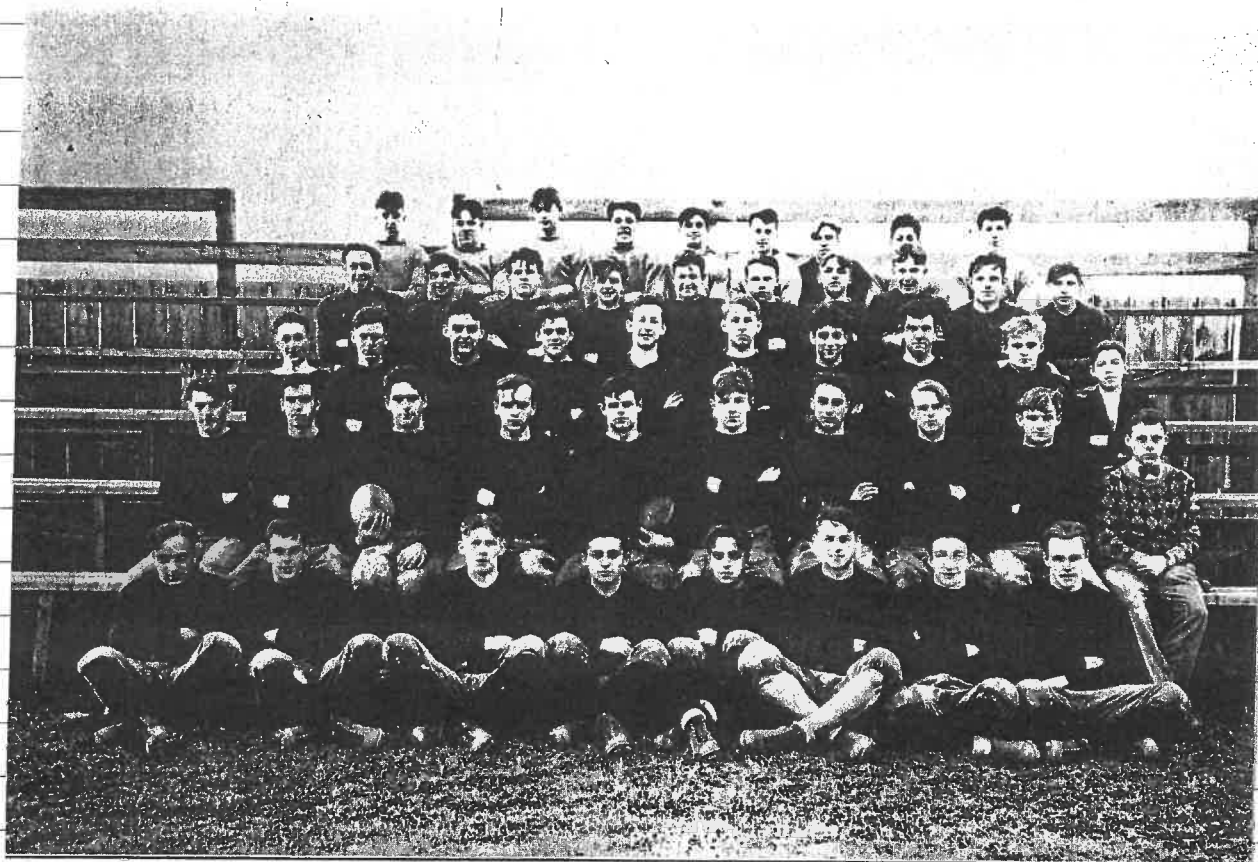
Banquet

Banquet sponsored by Loyal Boosters  
given to team at City Hall Tower, Dec. 11  
300 attended.

Honorable R. E. Burke - Principal Speaker  
Leonard Blakely elected 1929 Capt.

Scoring - 1928

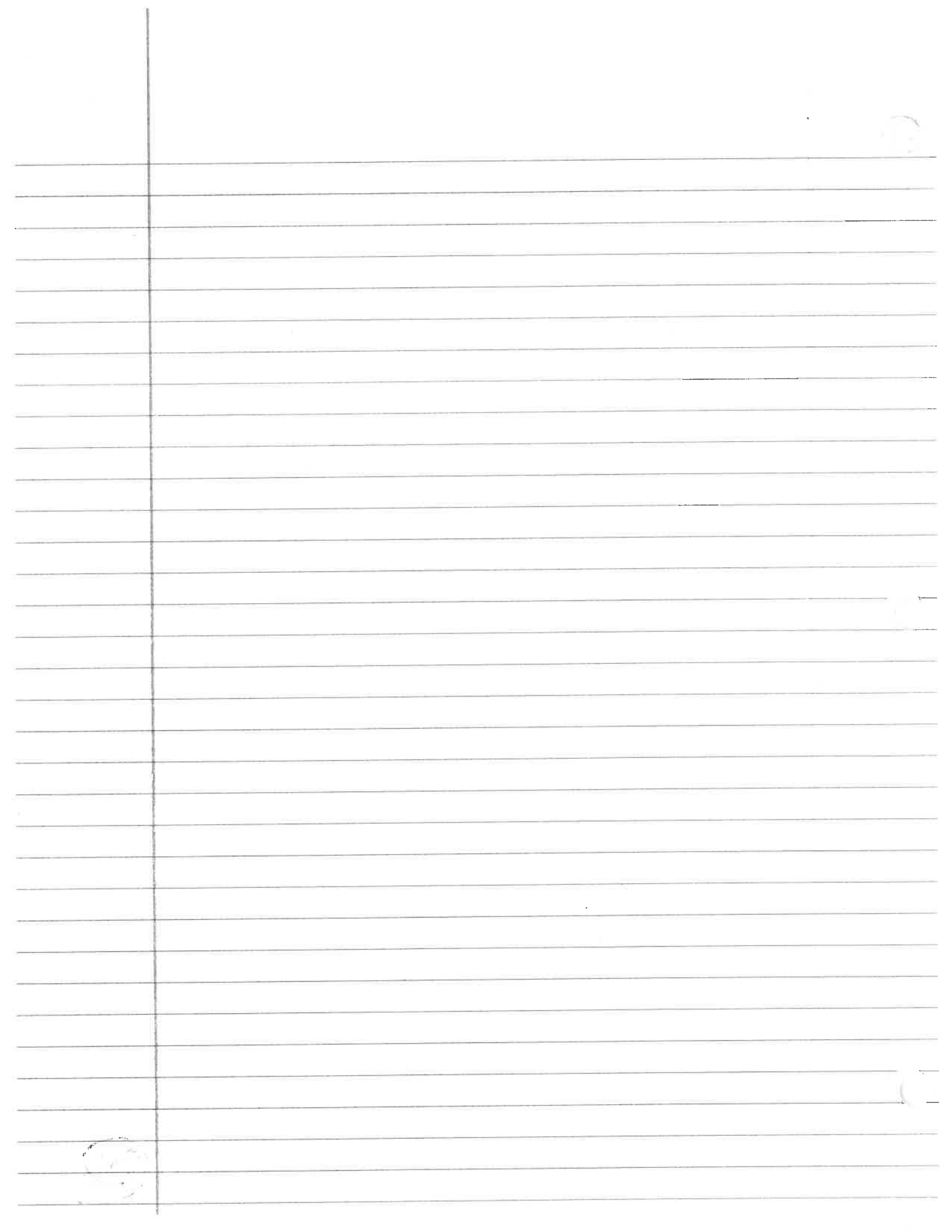
|                     | <u>TD</u> | <u>PAT</u> | <u>Totals</u> |
|---------------------|-----------|------------|---------------|
| Leon Annanian       | 8         |            | 48            |
| Robert "Bob" Fogg   | 1         | 8          | 14            |
| William Ogden       | 2         | 0          | 12            |
| Charles Traister    | 2         | 0          | 12            |
| Joseph Gallagher    | 2         | 0          | 12            |
| Whitefield Kimball  | 2         | 0          | 12            |
| Ken "Kewpie" Collis | 2         | 0          | 12            |
|                     | <u>19</u> | <u>8</u>   | <u>122</u>    |



#### FOOTBALL SQUAD OF 1928

5th row—Rogers, Riley, T. Fogg, Broyer, Lynch, Randall, Pelletier, Arsenault, C. Whalen.  
 4th row—Donahue, Torrey, Costello, Foley, Spalding, Higgins, Pollard, Lyons, Reardon, Murray.  
 3rd row—Adams, Lloyd, Fowle, Plucinski, E. Brown, Stevens, Rayno, W. Brown, Frank Graf, Erickson.  
 2nd row—Coffin, Hughes, Capt. M. Whalen, Tufts, Capt. Kimball, Blakely, R. Fogg, H. Brown, Fred Graf, Bartlett.  
 1st row—V. Ananian, Collis, Gallagher, Traister, I. Ananian, Ogden, Roney, Corey.





• Losses

Coach - Delmar Borah Asst. - George Edwards  
 Capt. - Leonard Blakely  
 ✓ Mgr. - Harold Bartlett Asst. - Norm Erickson

|     |            |                      |           |
|-----|------------|----------------------|-----------|
| NHS | 33         | Johnson, No. Andover | 0         |
|     | 41         | Manning, Ipswich     | 6         |
|     | 19         | Exeter High          | 0         |
|     | 34         | Simberton Academy    | 6         |
| •   | 6          | Rindge Tech          | 7         |
|     | 19         | Cambridge Latin      | 6         |
|     | 20         | Essex Aggies         | 0         |
|     | 28         | New Bedford          | 7         |
| •   | 0          | Chelsea              | 22        |
| •   | 6          | Salem                | 39        |
|     | 7          | Peabody              | 0         |
|     | <u>213</u> |                      | <u>93</u> |

Won 8 Lost 3

NOTES -

Whit Kimball at Dartmouth.

Charlie Traister - FB at Rents' Hill.

Harold Brown & Nelson Lloyd at Tilton Academy.

Lonel "Spike" Collis at Univ. of Penn.

Roster :- ✓ Letters & Sweaters

|     |                           |                        |                      |
|-----|---------------------------|------------------------|----------------------|
| RE  | ✓ Raymond Rayno           | ✓ Jimmy Lyons          | Joe Hudson           |
| RT  | ✓ Wm. "Bill" Browne       | Gerald Lyons           | Howard Norton        |
| RG  | ✓ Leonard Blakely         | Robert McKinney        | ✓ Harold McCurdy     |
| C   | ✓ Bill Belletier          | ✓ Jimmy Pulinlan       | Leo Scllicki         |
| LG  | ✓ Oscar Gilman            | Roy Kerbian            |                      |
| LT  | ✓ Tom Flaherty            | ✓ Bill Donahue         | Aron Kerbian         |
| LE  | George Randall            | Vernon Moss            | Nelson Corey         |
| QB  | ✓ Edwin "Spud" Bolland    | ✓ Charlie Whalen       | Thomas Roney         |
| LHB | ✓ Charlie Caddoo          | Don Whing              | Edward White         |
| RHB | ✓ Stephen "Stump" Godfrey | ✓ Louis "Sonny" Canepa | Everett Fellows      |
| FB  | Charlie Costello          | Bernard Rogee          | Arthur "Red" Marston |
|     |                           | ✓ Thomas Roney         | Albert Coltin        |

1929

9/21

NHS 33 Johnson, N. Andover 0

Johnson smothered in opener - outlook appears much brighter. Only 2 NHS lettermen started game. Cold, raw day.

NHS line 1 of best in years.

Bollard a natural broken field runner - good punter.

Canepa & Godfrey score 2 TD's each.

1<sup>st</sup> TD came on 3<sup>rd</sup> play of game - Johnson fumbled kickoff on 10 - NHS recovered. Godfrey sprinted around end for score.

Johnson High - crude & slow - not in best condition

PAT - TD - Canepa 2 (rush)  
 Godfrey 2 (rush) Godfrey 2 (1-10 yd. run)  
 Bollard 1 (dropkick) Bollard 1 (rush)

#### NEW RULE -

"Free Substitution" is now allowed with agreement of both coaches.

In past players couldn't play again in same half they were taken out.

Can only play 4 years.

9/28

NHS 41

Manning, Ipswich 6

Manning swamped - Coach B. used 3 full teams.

Game marked by brilliant punt runbacks of Spud Bollard, Godfrey, Caddoo, Canepa & White - starred.

NHS scored in every period but last. Manning made only 2 1<sup>st</sup> downs rushing - Ipswich showed great pluck & gameness.

TD - Godfrey 2 (1-34 yd. run)  
 Bollard 1 (1-18 yd. run - interc. pass)  
 PAT - Bollard 1 (30 yd. run on crisis cross play)  
 Bollard 2 (dropkicks) White 1 (34 yd. run)  
 Godfrey 1 (rush) Caddoo 1 (35 yd. pass from Godfrey)  
 Canepa 1 (end run)

Safety - Manning High

(Continued)

1929

10/5

NHS

19

Exeter High

0

Crimson & Gold have little trouble disposing of N.H. team - surprisingly small crowd.

NHS downfield blocking bad, especially on punts.  
Local line impregnable.

Willie Cellistier - strained ligament in leg.

Canepa called plays in the huddle.

Bollard did some excellent kicking.

1<sup>st</sup> TD followed after poor Exeter kick to only its 20 - Godfrey scored on 4 yd. Criss Cross play

Beautiful 34 yd. pass - Godfrey to Rayno  
brought ball to Exeter 10 - Costello scored from 2.  
Exeter was surprisingly strong - gave a tough game

TD - Caddoo 1 (rush)

PAT -

Godfrey 1 (4 yd. run)

Caddoo 1 (rush)

Costello 1 (2 yd. run)

10/12

NHS

34

Binkerton Academy

6

Running attack smothered Binkerton - NHS wins 4<sup>th</sup> straight.

Brilliant running of Godfrey & Canepa caught fancy of crowd.

1<sup>st</sup> half (14-6) was good football but locals turned it into a rout in 3<sup>rd</sup> period (20 pts.).

Binkerton got as far as NHS 10 twice - Binkerton punting poor.

TD - Canepa 2 (1-18 yd. run)  
1-45 yd. run)

PAT -

Bollard 1 (15 yd. run)

Bollard 2 (drop)

Flaherty 1 (recovered punt in end zone)

Caddoo 1 (rush)

Whalen 1 (18 yds. w/inter. pass)

Godfrey 1 (rush)

(Over)

(345)

1929

Npt. Daily News 10/17/29

## No Such School as Salem Trade

For at least 3 or 4 years Salem Trade has been banging around the circuit playing several high schools. They have played quietly, losing most of its games but always appearing to be a legitimate scholastic group.

Investigation proved that no such school as Salem Trade existed. Rather they were a group most of whom weren't even in school with no regard for age - some even were paid.

They were - a tailor's apprentice, a chauffeur, a leather worker & a pro boxer.

The Salem press was aware but never let the facts out - they thought no harm would be done.

10/19

NHS & Rindge Tech 7

Off-side play is disastrous - gives Rindge 1 pt. victory in thrilling encounter.

Game scoreless until last period.

Tech was as powerful as advertised - outweighed NHS 15 lbs. per man. Expected an easy victory.

NHS outtrucked Rindge 94 to 62.

NHS completed 5 passes RT 4/14

NHS TD drive started at end of 3rd period on 47 yd. line. Mixed passes & runs with Caddoo bucking over. Ballard's attempted dropkick was wide.

R. Tech TD was set up on a 34 yd. punt runback to Npt. 33. Then followed a long successful pass to tie score. The try for extra pt. was a pass which failed but a Npt. player was offside & the winning pt. was awarded Rindge Tech.

(324)

TD - Caddoo 1 (rush)

(Continued)



1929

10/24

NHS 19 Cambridge Latin 6

Tom Flaherty out with injuries.

NHS scores 19 pts. in 1st half & banishes 5 year Camb. Latin. first.

Camb. L. was big & rugged - didn't get started until 2nd half.

2 of NHS's TD's resulted indirectly from Camb. fumbles.

NHS scored in 1st few minutes when Camb. L. punter fumbled snap & Npt. recovered on 20. Godfrey tossed a 15 yd. pass to Ballard for score.

A poor kick gave Npt. ball at C.L. 18. Godfrey ran 7 yds. for 2nd TD.

3rd TD set up when Camb. L. fumbled on their 34 & Jimmie Lyons recovered. Ballard ran 14 yds. - a Godfrey to Ballard pass for 11 yds. - Ballard then ran 9 yds. for TD.

PAT - TD - Ballard 2 (15 yd. pass - Godfrey)  
9 yd. run  
Godfrey 1 (rush) Godfrey 1 (7 yd. run)

11/2

NHS 20 Essex Aggie 0

Godfrey & Rayno stage clever passing attack - Rayno shines - 2,000 endure extreme heat 78°.

Nimble footed - molasses fingered Rayno caught everything in sight - recovered a blocked punt for TD in 1st period & broke up Aggie interfer. at end.

Godfrey's passing was sensational.

Ballard got off a 42 yd. kick.

PAT - TD - Rayno 2 (recov. blocked punt - TD)  
15 yd. pass - Godfrey  
Castello 1 (rush) Ballard 1 (11 yd. pass - Godfrey)  
Ballard 1 (dropkick)

(Over)

(327)

11/9

NB not as strong as supposed to be -  
NHS tackling poor.

Galland featured with his runbacks - weaving, side-step, cross-step & wriggled.

PAT-

TD - Gallard 2 (1 yd. plunge)  
3 yds. run)

Godfrey 2 (rush)

Goodfrey 1 (38 yd. run)

Caddoo 1 (rush)

Caddos 1 (rush)

Ballard 1 (dropkick)

11/14

NHS

0

Chelsea

သို့သော်

Collard was out with an injury.

- talking in class - given slip & told to return
- didn't & was suspended.

NHS registered only 3 1st downs all day.

Capt. Blakely was outstanding while he was in game.

Chelsea spectacular in off tackle plays.

Several NHS players out of position - poor tackling

Failed to score for 1st time this season.

Capt. Blakely, Rayno, Fellows, Canepa  
& Quinlan saw limited action.

328

(Continued)

11/23

NHS

6

1929

Salem

39

Record crowd of 7,000 sees Witch City  
mighty team overwhelm locals.

Outstanding local feature was Godfrey's  
87 yd. TD kickoff return in 1<sup>st</sup> period.

Game was settled before 1<sup>st</sup> half - field slippery

Chilled to marrow by easterly wind.

Salem gained over 200 yds. rushing featuring  
Heffernan & Normie Rand (born in Npt.).

Vicious battle in line between Capt. Blakely  
& Salem's Capt. Gracyk.

Charlie Caddoo was outstanding on defense.

Salem fans come on special train.

Godfrey by scoring TD - entitled to free  
ride in Jimmie Dickin's cabin monoplane.

TD - Godfrey 1 (87 yd. kickoff  
return)

Thanks.

11/28

NHS

7

Peabody

0

Blocked kick beats Tanners - Jim Lyons,  
the hero - fought in bitter cold & snow.

Blocked kick set up when Peabody tried  
to kick out from 5 in final period. Lyons dove for  
ball & blocked it with side of face & bounded back-  
wards out of bounds - recovered by Caddoo at 1.  
Caddoo dove over from 1 & then rushed pt.

Lyons, McCurdy, Capt. Blakely & Uthaler  
played their last game & covered themselves w/ glory.

Godfrey & Canepa batted down a number  
of passes.

Bolland wore leather mask for nose injury.

TD - Caddoo 1 (1 yd. plunge)

PAT -

Caddoo 1 (rush)

(329)

(Peabody)

1929

Banquet - Dec. 10

Held at City Hall by Loyal Boosters

Toastmaster - Herbert Folsom

Principal Speaker - Tom Ready, Coach of Quantico Marines

Letters & Sweaters were awarded.

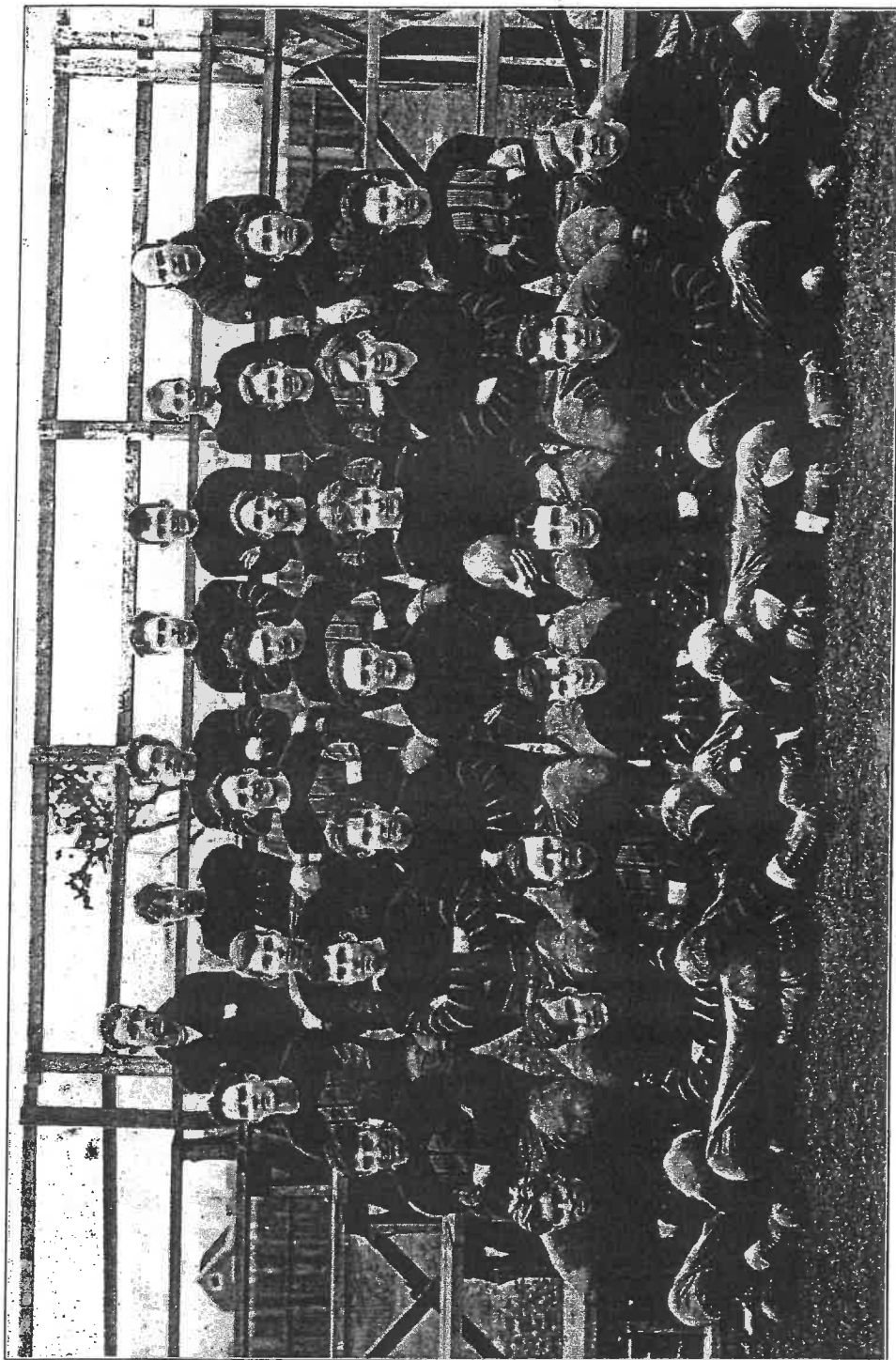
"Gump" Godfrey elected 1930 Capt.

Scoring - 1929

|                        | <u>TD</u> | <u>PAT</u> | <u>Totals</u> |
|------------------------|-----------|------------|---------------|
| Stephen "Gump" Godfrey | 8         | 7          | 55            |
| Edwin "Spud" Ballard   | 8         | 7          | 55            |
| Charlie Caddoo         | 5         | 4          | 34            |
| Louis "Sonny" Canepa   | 5         |            | 30            |
| Raymond Rayno          | 2         |            | 12            |
| Charlie Costello       | 1         | 1          | 7             |
| Edward White           | 1         |            | 6             |
| Tom Flaherty           | 1         |            | 6             |
| Charlie Whalen         | 1         |            | 6             |
|                        | <u>32</u> | <u>19</u>  | <u>211</u>    |

\* Safety in Manning game + 2 \*

*"I rose to fight and won"*



#### FOOTBALL SQUAD OF 1929

Front Row—Left to Right—Pelletier, Bishop, Wing, Burke, Roney, Hudson, Sielicki.

Second Row—Left to Right—Rayno, Browne, Gilman, Quinlan, Capt. Blakely, J. Lyons, Whalen.

Third Row—Left to Right—Fellows, White, Canepa, Caddoo, Pollard, Godfrey, Kozec.

Rear Row—Left to Right—Asst. Coach Geo. Edwards, Donahue, Moss, McCurdy, Randall, Mgr. Bartlett, Head Coach Del Borah.





# Fifty years young

## World War Memorial Stadium has gracefully endured ravages of time

By KEVIN DOYLE  
Daily News sports editor

**NEWBURYPORT** - It's a dinosaur, one of the last of a vanishing breed.

Yet, on the eve of its 50th birthday, Newburyport High School's imposing World War Memorial Stadium won't be showing its age when the high school varsity opens its season against Lincoln-Sudbury tomorrow night.

While its concrete contemporaries crumble, constant care has kept the stadium in top condition.

Landry Stadium in Amesbury, a year older, is in need of extensive work. Bertram Field in Salem underwent an extensive overhaul a few years back. Lynn's Manning Bowl and Haverhill Stadium, which opened in 1911, have both required major repairs. Memorial Stadium in Lawrence suffers from terminal neglect and has become a blight on the landscape.

"The key has been basically just to stay

with it every year. It had a major overhaul in the mid-1970s when we put the aluminum seating in and from then on it's been constant care, taking care of the little things, every year," said Athletic Director and former long-time head coach Jim Stehlin.

"A lot of credit has to go to former Assistant Superintendent Buddy Knox and to Joe Donnelly, the Assistant Superintendent now. It's a cooperative effort. You have to do something each year," said Stehlin.

The entire Mt. Rural construction project - high school, outer wall and athletic fields - was funded by the Works Progress Administration (WPA).

In The Daily News of Oct. 30, 1937 school committee member Don Page - honored on the Wall of Fame as the "architect" of the stadium for his tireless work in pursuing its development - urged completion of the school's athletic fields.

Three weeks later, on Nov. 18, varsity  
**Stadium, Page D2**



Newburyport's World War Memorial Stadium turns 50 years old this weekend.

MARC MCGEEHAN PHOTO

[illegible]

This image shows a single sheet of white, lined notebook paper. It features horizontal blue or grey ruling lines spaced evenly down the page. A single vertical line runs parallel to the left edge, creating a narrow margin. The paper appears slightly aged or off-white. There are some faint, dark smudges and marks scattered across the surface, particularly near the bottom right corner. The overall appearance is that of a clean but used piece of stationery.

# STADIUM

Continued from Page D1

football coach John Donovan sought support of the stadium project during a speech to the Kiwanis Club.

"Newburyport High is confronted with an undesirable situation in that it has no place here to play football. Each week the boys have to go out of town and face crowds (that are) predominantly hostile," said Donovan, quoted in The Daily News of Nov. 19.

On the same night Donovan made his plea, the school committee approved in principle the plan to construct a south grandstand of 5000 seats. Plans were drawn up for submission to the WPA and the City Council and Mayor Andrew "Bossy" Gillis were asked to provide the city's share of money to supplement the federally-funded project.

Once plans and funding were approved work went forward and the stadium was christened on Sept. 16, 1939 although work was not finished. On a sweltering 90-degree Saturday afternoon, Salem scored two fourth-period touchdowns to record a 13-0 victory.

It was reported in The Daily News on

Monday, Sept. 18 that formal dedication ceremonies would be held when the entire plant was completed. Portable bleachers were rented in Salem and transported to the stadium site to provide supplemental seating for the opening game crowd of approximately 3,000 fans.

Some of the team members in that first game were captain Bob McGlew, Warren Page, Francis Lucy, Buddy Knox, Wil Chagny, Vic Woron, George Andrews and twins Norbert and Norman LeClair.

On Nov. 30 of that year, Newburyport and Amesbury battled to a 7-7 tie in the first Thanksgiving Day game played in the stadium. Billy Boutin scored Newburyport's touchdown while Snooky Lariviere tallied for Amesbury.

Newburyport teams previously played at the old Newburyport Athletic Council (NAC) field through 1936. Prior to that, games were held at the Moseley Avenue grounds, the Trotting Park on Storey Avenue and a field on the Plum Island Turnpike near the Sportsmen's Lodge restaurant.

The NAC facility, located in the South End on land that is now Beacon Street,

ran parallel to Marlboro Street between Oak Street and So. Pond Street. Its wooden bleachers extended from goal line to goal line and the seating capacity was in excess of 5,000.

It was demolished after the 1936 season and the 1937 and 1938 teams led a nomadic existence. Both used what is now the stadium field for practice.

Research showed that the lone home game in that two-year period was the 1937 Thanksgiving Day game. For the holiday, a makeshift field was set up at Central (now Cashman) Park - to no avail, as Amesbury rolled to a 25-0 win.

"They did that so we'd have a home game. It didn't matter. We probably would've been better off playing in Amesbury," said school committeeman Norm Doyle, a senior on that 1937 team.

Stehlin, who was head coach for 20 years from 1964-83, recalled his first glimpse of the stadium.

"The first time I saw it was as an assistant at Natick. We were playing Woburn and had a film exchange. It turned out the film was a Woburn-Newburyport game. I can remember sitting in the

coach's room saying 'that's some kind of stadium.' When the job opened up here, that's one of the first things that lit up in my mind," he said.

The stadium has been host to many memorable games, too numerous to list.

A 34-13 win against Amesbury in 1953 and a Northeastern Conference title-clinching victory in 1966 attracted the two largest crowds in history - both in excess of 10,000 fans. A scintillating 24-21 overtime win against eventual Div. III Super Bowl champ Ipswich in 1977 drew another capacity crowd.

"We played that on Sunday because it had rained so bad Saturday. It was still damp and cloudy, but the field was fast. It drained wonderfully," said Stehlin.

There's a reason.

A little-known fact about the stadium is that, for drainage purposes, it has an 18-inch downhill pitch from east to west. In other words, when players are running towards Toppan's Lane, they're actually going downhill.

The stadium embodies tradition.

"When you see a stadium like that, you know there's a definite commitment to the

sport. It's something to be very proud of for the players, the school and the city. It means a lot to everyone concerned," said Stehlin.

"Our kids are aware of the tradition, more so than I thought. It's a special place to play and we tell them that. We had some good crowds last year, but I'd like to see it packed all the time. It's a big old place and it can be cavernous, but it's a great place to play," said current varsity coach Ed Gaudiano. "Any high school kid walking in from a visiting team has to be impressed."

In these days of shrinking attendance, the stadium often seems lifeless, an aging behemoth in quiet repose. But the crowds still shake down the thunder for rivalry games against Amesbury, Triton and Pentucket.

"I think it's reached the point that it is sort of taken for granted," Stehlin said wistfully. "The fewer times you fill it, the more it gets taken for granted. Maybe the days are gone where we'll have the opportunity to ever fill it again. But it's still a first-class high school operation."





# Wall of Fame inductees feted

By KEVIN DOYLE  
Daily News sports editor

NEWBURYPORT - Tradition, pride and a commitment to excellence were recurring themes during Newburyport High School's Football Wall of Fame induction ceremonies yesterday.

Athletic Director and former coach Jim Stehlin, former coach Walter Sheridan and former players Bob McAniff and Paul Reilly joined Del Borah, Deron Gulazian, Don Page and Fred Naumetz on the Wall, located at the west end of World War Memorial Stadium's north stands.

Plaques honoring the new members were unveiled during a brief morning ceremony at the stadium. Each was presented a second plaque during a luncheon at 10 Center Street, organized by selection committee members and former NHS players Ken Ladd and Mike Bresnahan.

They were introduced again during halftime ceremonies emceed by selection committee member Norm Doyle at last night's high school football season opener against Lincoln-Sudbury. McAniff, unable to attend due to illness, was represented by his sons Bob and Tim.

The luncheon, attended by the inductees, their families, school officials and selection committee members was a stroll down memory lane.

"Tradition is one of the greatest strengths of Newburyport High School and the Wall of Fame is one of the greatest things we've done," said Superintendent of Schools Francis T. Bresnahan, a selection committee member.

Reilly's plaque cited him as an "outstanding quarterback and team leader." The 1954 graduate was instrumental in the program's turnaround under Sheridan.

Former teammate and selection committee member Frank Serwon introduced Reilly and called him "the greatest NHS quarterback I've ever seen."

"I'm proud to have my family here and proud to be going in with two of the finest gentlemen (Sheridan and Stehlin) I've ever known and the best back (McAniff) I've ever seen," said Reilly, who celebrated his 33rd wedding anniversary with his wife Joanne as well yesterday.

Stehlin, who coached from 1964-83 had three undefeated state championship teams (1966, '75 and '76) and won eight league championships (1965, '66, '73, '74, '75, '76, '77 and 80).

He was introduced by Larry Russell, an All-Scholastic quarterback under Stehlin in 1965-66.

"When I think of the name Jim Stehlin, I think of pride and winning and that they're synonymous with Newburyport football. He instilled in us the pride of what it meant to play for Newburyport High School," said Russell.

"My thanks to Newburyport. Since I came here, it's been a wonderful time for me and my family - a tremendous 26 years," said Stehlin. "I have a great belief in family and the special feelings you develop towards each other. As a result of that you have to understand that you should contribute to the total effort. You put your name on things. If you don't, there's no way you can talk about pride."

In 1952, Sheridan took over a program that had three winning seasons in the previous 20 years and turned it into a state power. His plaque states that he was the "leader of the resurgence of NHS football." He had five straight winning seasons and won the 1955 state Class C crown before going on to similar success at Salem and Saugus High Schools.

He was introduced by Bresnahan, who served as Faculty Manager under Sheridan.

"You have to keep in perspective what he did that first year. He took a group of kids who'd been demoralized by the 99-6 loss to Amesbury the year before and turned them into winners. His legacy is that we have high expectations of those who play football at Newburyport," said Bresnahan.

Sheridan had the Clippers wear green jerseys on Thanksgiving Day in 1952 and once scrapped his usual offense to install the Single Wing for a game against Catholic League power Archbishop Williams.

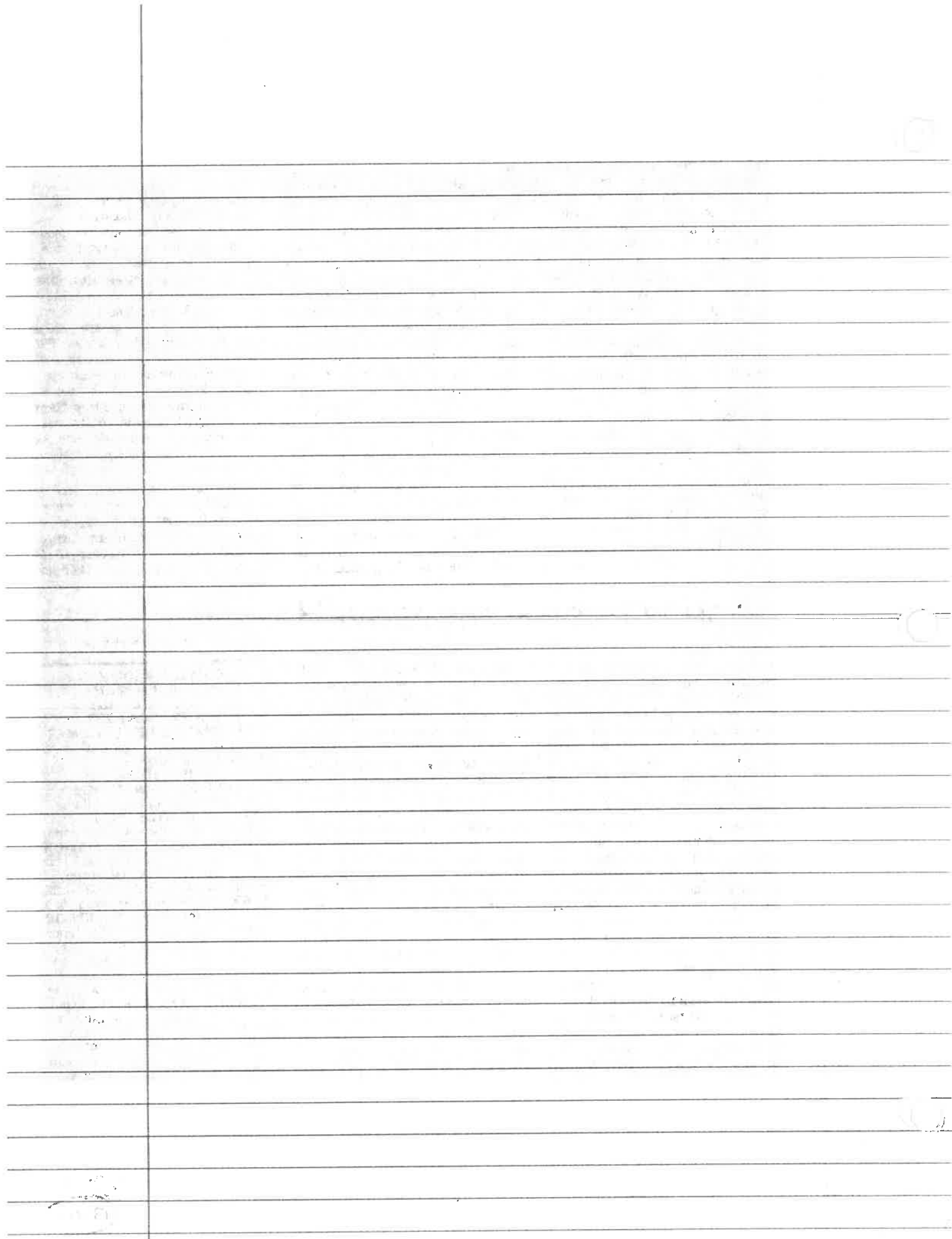
"This brings back many pleasant memories. You always become attached to the place that's your first stop along the way. The only thing I didn't like about Newburyport was the colors. Maroon and gold. That's B.C.," quipped Sheridan, a Holy Cross graduate.

McAniff's plaque describes him as a "running back non-pareil." He followed an All-Scholastic career at NHS with stellar seasons at Cornell, where he was selected All-East in 1957.

Sheridan presented McAniff's plaque to his sons.

"My offense was completely changed to accommodate the talents of Bob and Paul (Reilly). Bob was blessed with extreme speed and was one of the finest backs I ever saw or coached. He had the uncanny ability to change direction and never lose a step. He was also a model student. I never had a problem with him," said Sheridan.

"On behalf of my father, I'd like to thank the city and the committee. The Wall of Fame is a great honor. I know he would've liked to have been here," said McAniff's son Bob.





MARC MCGEEHAN PHOTO  
**Wall of Fame inductees stand beneath their plaques following yesterday morning's unveiling. From left, Tim and Bob McAniff, representing their father Bob McAniff, Paul Reilly, Walt Sheridan and Jim Stehlin.**



# South End Stadium

NHS - 1930

Coach - Delmar Borah

Capt. - Stephen "Clump" Godfrey

Mgr. - Norman Erickson

• Losses

|           |     |                            |    |
|-----------|-----|----------------------------|----|
| NHS (Tie) | 0   | Johnson, N. Andover        | 0  |
|           | 3   | Gloucester                 | 0  |
|           | 21  | Maynard                    | 0  |
|           | 40  | Fair Haven, Vt.            | 7  |
|           | 21  | Exeter High                | 0  |
|           |     | Clinton (Cancelled - Rain) |    |
| (Tie)     | 7   | Marblehead                 | 7  |
|           | 12  | Lynn Classical             | 0  |
|           | 20  | Bridgewater                | 4  |
| •         | 0   | @ Salem                    | 4  |
|           | 13  | Beverly                    | 0  |
|           | 137 |                            | 26 |

Won 7 Lost 1 T 2

## NOTES -

Don Wing & Everett Fellows not eligible until Nov. 1.  
 "Spike" Collins plays for U of Penn & scored against Notre Dame  
 Bob Fagg - regular FB at Marshall College, Hunt-  
 ington, W. Virginia, Leon Amarian 2nd string QB.  
 New High School Band dir. by Joe Donahue - George Cousins  
 - Drum Major.

## Roster :-

|     |                         |                      |                  |
|-----|-------------------------|----------------------|------------------|
| RE  | Raymond Rayno           | Nelson Corey         | Michael Wanagel  |
| RT  | Aram Kerkian            | Oscar Gilman         | Gerald Lyons     |
| RG  | Sidney Blucinski        | Lee Sielicki         | Bernard Rogec    |
| C   | "Wee" Willie Belletier  | Robert McKinney      | Malcolm Fullman  |
| LG  | Bill Donahue            | Edward Blucinski     | Roy Kerkian      |
| LT  | Tom Flaherty            | Howard Norton        | Eugene Chaneuf   |
| LE  | Johnny Bishop           | George Randall       | Edward White     |
| QB  | Edwin "Spud" Gollard    | Walter Jackson       | Herbert De Veber |
| RHB | Stephen "Clump" Godfrey | Don Wing             | Everett Fellows  |
| LHB | Louis "Sonny" Canepa    | Arthur "Red" Marston | Malcolm Hilton   |
| FB  | Charlie Caddoo          | Darrel Knight        | Albert Coltin    |
|     | Gordon Beal             | Irving Barth         | John Latuske     |
|     | Arthur Dunn             | A. V. Barth          | Arthur Dunn      |



9/20

NHS

1930

Johnson, N. Andover

1st game ends in scoreless tie - opener fails to impress fans - outplayed by Johnson.

Lacked power, pep & defensive ability - seemed to be internal strife in the backfield.

It took a little Soph., Albie Caltin, to furnish any excitement - made several gains on his own.

Only in Ballard's punting did NHS have an edge.

Johnson high piled thru Npt. line at will.

NHS thru luck got within a ft. of Johnson goal but couldn't score - a pass bounced off shoulders of a Johnson back into a local player's arms.

9/27

NHS

3

Gloucester

18 yd. Field Goal by "Spud" Ballard in last quarter beats Glouc. - team showing better.

Glouc. was strong & gave locals a run for their money

NHS threatened twice - once to the 15 where Ballard missed a FG & other time to the 10 where bad pass from center caused a fumble.

Caddose work on offense & Ballard's punting took eyes of a very large crowd.

Presence of Cocoe Kilman in lineup made <sup>difference</sup> big & regulars slightly injured - Donahue (knee), Belkettin (shoulder), Canepa (ankle).

Field Goal - Ballard 1 (18 yds.)

10/4

NHS

21

Maynard

NHS crushes May. - had snappy backfield, weak line

A long 36 yd. pass Godfrey to Bishop - 1st score.

2 inter. passes produced the 2nd & 3rd TD's

- Caddose ran 1 back for 44 yds & Godfrey 1 for 59 yds.

Albie Caltin tore off a few good runs while

Rayno played a whale of a game at end.

TD - Bishop 1 (36 yd. pass - Godfrey)

PAT -

Ballard 3 (drops)

Caddose 1 (44 yds. w/ inter. pass)

Godfrey 1 (59 yds. w/ inter. pass)

(337)

Columbus  
10/13

1930  
NHS 40 Fair Haven, Vt. 7

NHS brilliant in intersectional win-run roughshod over Vermonters before a large sweltering crowd. Good weather for sun bathing.

Fair Haven very weak - a 1 man team (Capt. Wells).  
Capt. Godfrey ran wild with 3 TD's.  
Charlie Caddoo scored 2.

Bishop caught 22 yd. pass to set up 1<sup>st</sup> score - Godfrey eventually scoring.

Charlie Caddoo is building a reputation as 1 of the greatest defensive fullbacks in NHS history.

A 59 yd. run by Ballard to Fair Haven 5 set up a 5 yd. TD run by Caddoo.

|                  |                             |
|------------------|-----------------------------|
| PAT -            | TD - Godfrey 3 (rush)       |
| Ballard 2 (drop) | Caddoo 2 (3 & 5 yd. rushes) |
| Jackson 1 (drop) | Marston 1 (rush)            |
| Caddoo 1 (rush)  |                             |

10/18

NHS 21 Exeter High 0

NHS wins in slow, uninteresting game

- Exeter has never beaten Npt.

Visitors never once forced locals to exert themselves.  
Game was hardly underway when NHS blocked a punt at Exeter 43 - Godfrey later carried over from 2<sup>nd</sup> TD set up when Rayno recovered fumble at Ex. 40 & a feeble Ex. punt enabled C. Caddoo to ramble on a 10 yd. TD run.

3<sup>rd</sup> TD - Ballard ran kickoff back 37 yds. to Ex. 30 - Ballard ran for 15 yds. to 15 - Rayno caught a pass to 1 & Ballard carried it over.

|                  |                             |
|------------------|-----------------------------|
| PAT -            | TD - Godfrey 1 (2 yd. rush) |
| Ballard 3 (drop) | Caddoo 1 (10 yd. run)       |
|                  | Ballard 1 (1 yd. plunge)    |
|                  | (Over)                      |

(328)

1930

10/25

NHS vs Clinton Game Cancelled  
- Rain

11/4

NHS 7 Marblehead 7

Caddoo stars as locals come from behind in closing minutes to deadlock Headers.

Jinx still holds of Npt. never having beaten Marblehead.

Caddoo, only consolation in weak showing by locals.

Marb. scored in 3rd quarter on a pass intercept, & subsequent 81 yds. return for a TD.

With only 4 min. remaining Caddoo started on his own 39 - carried ball 11 times for 45 of the 61 yds. finally scoring from inside 1. 1 of the greatest display of line plunging ever seen.

Spud Ballard then dropkicked the PAT for the tie.

TD - Caddoo 1 (1 yds. plunge)

PAT - Ballard 1 (dropkick)

11/8

NHS 12 Lynn Classical 0

Crimson impressive & remain undefeated as Caddoo's 2 TD runs & Rayno's all-around playing featured. Largest crowd of season.

Lynn. was never dangerous & closest they came was Npt. 15.

1st TD set up by 48 yds. punt by Ballard & a subsequent kick by Class. to their 30. Caddoo went over from 5 to score.

Most spect. play was Caddoo's pass interc. on N 15 & an 85 yds. return for the TD.

Ray Rayno was most outstanding player on field.

PAT -

Caddoo 1 (rush)

Ballard 1 (drop.)

TD - Caddoo 2 (rushes)

(over) Marston 1 (rush)

(339)

11/22

NHS 0 @ Salem

6

Witches barely edges out NHS - TD late in final period final 1st defeat on locale - team glorious in defeat. Indian Summer day.

Lone TD came late in final period after an outweighted & underdog Npt. 11 turned back several scoring bids.

TD followed removal from game w/injury - Norm Rand, star Salem back. Team took on new life w/ revenge in minds with only 4 minutes left in game & ground out the winning TD.

Npt. then unleashed a passing attack featuring passing of Godfrey. Godfrey hit Canepa for 22 yds. bringing ball to Salem & 1 - Godfrey to Canepa for 8 yds. However, Salem held.

Collard was at his best doing everything - his punting kept Salem in hole all day.

After the game students marched behind NHS Band to depot for train ride home.

Thanks,  
11/27

NHS 13 Seabody 0

Collard thrills holiday crowd w/ 86 yd. run - Canepa to Bishop pass feature victory.

Most successful season since 1919. Freezing temp.

Game ends career for Collard, Godfrey, Caddoo (Canepa returns) - 1 of greatest backfielders.

Collard's brilliant run was in 1st period & never would have scored but for blocking of Gilman

2nd TD also spectacular. On a triple-pass Canepa heaved a 40 yd. pass to Bishop who gathered it in & ran 10 yds. for score.

Rayno, as usual, put on a starry exhibition Willie Bellier & Albie Coltin did well.

PAT -

Collard 1 (drop)

TD - Collard 1 (86 yd. run)

Bishop 1 (50 yd. pass & run)

(340)

1930

Banquet - Dec. 10

Held at City Hall by Loyal Boosters.

Principal Speaker - Brother Gilbert

Toastmaster - Charles Phelps

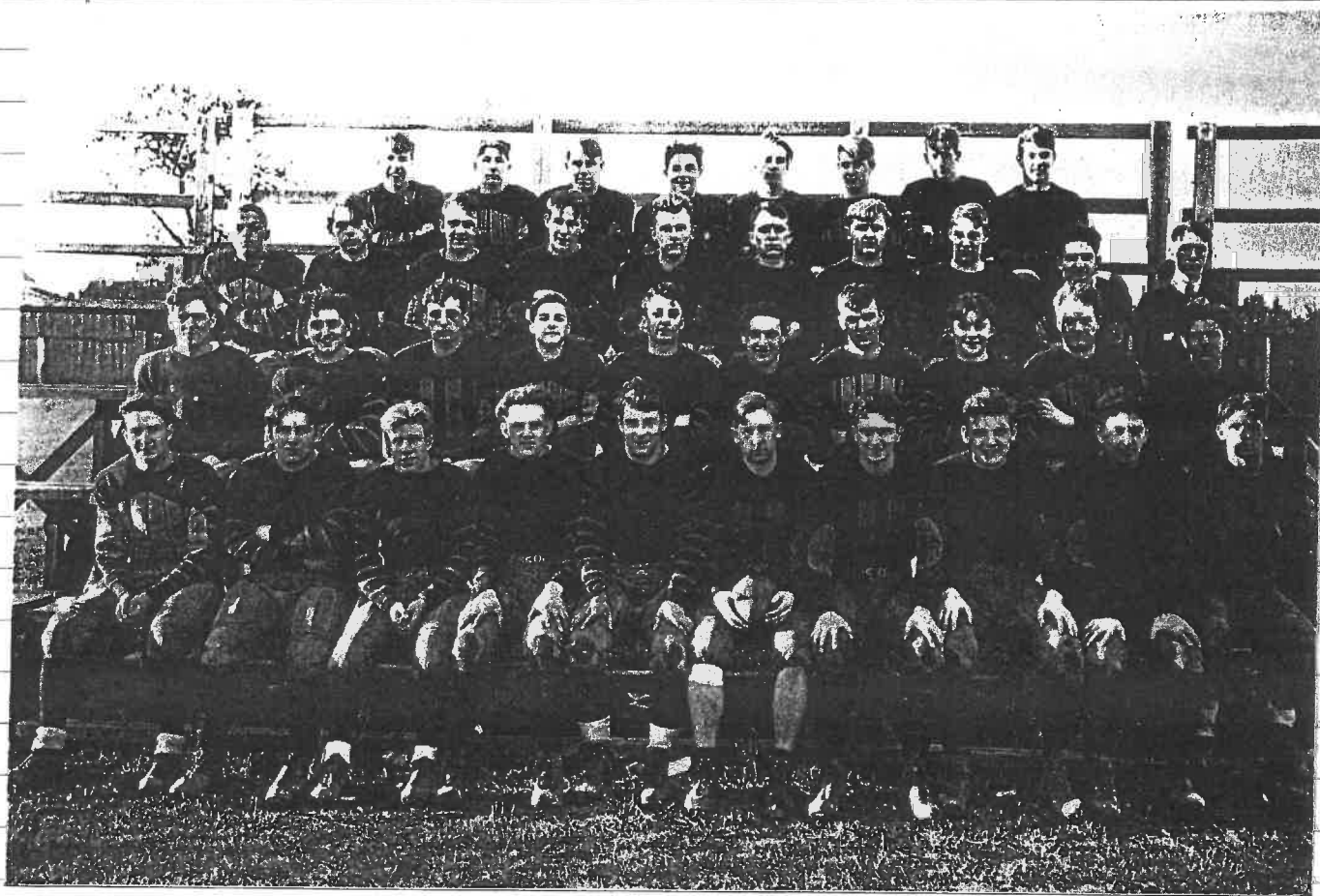
Letters & sweaters were awarded.

Johnny Bishop elected 1931 Capt.

Scoring - 1930

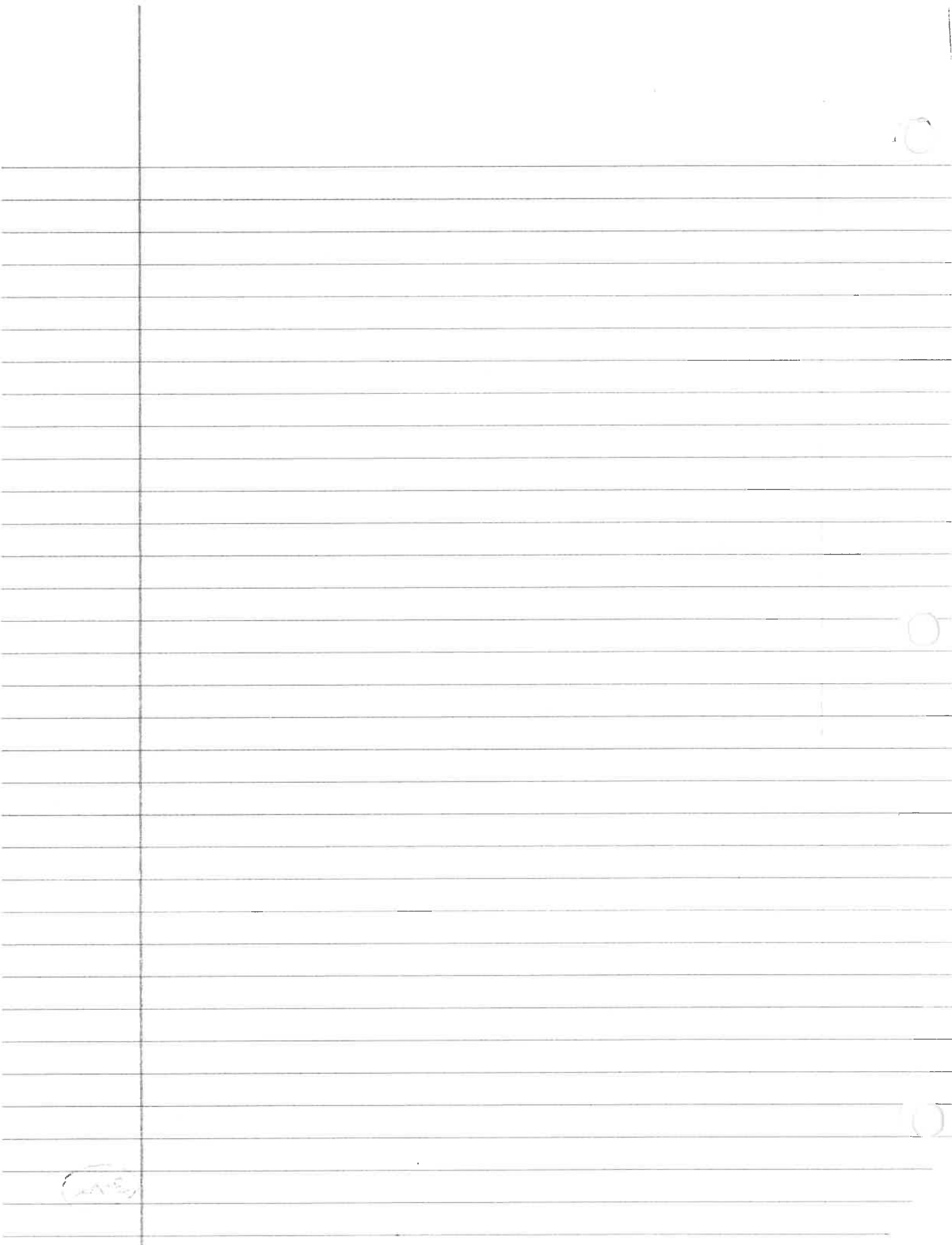
|                        | <u>TD</u> | <u>PAT</u> | <u>FG</u> | <u>Total<br/>Pts.</u> |
|------------------------|-----------|------------|-----------|-----------------------|
| Charlie Caddoo         | 9         | 2          |           | 56                    |
| Stephen "Gump" Godfrey | 5         |            |           | 30                    |
| Edwin "Spud" Ballard   | 2         | 11         | 1         | 26                    |
| Arthur "Red" Marston   | 2         |            |           | 12                    |
| Johnny Bishop          | 2         |            |           | 12                    |
| Walter Jackson         |           | 1          |           | 1                     |
|                        | <u>20</u> | <u>14</u>  | <u>1</u>  | <u>137</u>            |





NEWBURYPORT HIGH SCHOOL VARSITY SQUAD OF 1930

FRONT ROW—E. Fellows, B. Kozee, W. Pelletier, E. Plucinski, R. Rayno, S. Godfrey, Capt., G. Caddoo, T. Flaherty, A. Kerkian, E. Pollard  
 SECOND ROW—S. Plucinski, R. Kerkian, L. Canepa, E. Phaulenf, M. Hilton, J. Latuske, J. Bishop, I. Barth, A. Marston, M. Wanagel  
 THIRD ROW—W. Jackson, R. McKinney, G. Randall, O. Gilman, H. Norton, N. Corey, L. Sielicki, H. DeVeber, A. Coltin, N. Erickson, Mgr.  
 BACK ROW—W. Donahue, D. Knight, E. White, M. Fellman, A. Dow, G. Lyons, A. Burns, H. Beal



# South End Stadium

NHS - 1931

Losses

Coach - Delmar Borah Asst. - (Temple coach) Bob Pike  
Capt. - Johnny Bishop  
Mng. - D. La Plante

|       |            |                     |           |
|-------|------------|---------------------|-----------|
| NHS   | 47         | Johnson, N. Andover | 0         |
|       | 18         | St. James           | 0         |
| (Tie) | 6          | Beverly             | 6         |
|       | 26         | @ Fair Haven, Vt.   | 12        |
|       | 31         | Lebanon, N. H.      | 0         |
|       | 32         | Essex Aggies        | 0         |
|       | 20         | @ Marblehead        | 0         |
| (Tie) | 0          | Lynn Classical      | 0         |
|       | 20         | @ Amesbury          | 6         |
|       | 0          | Salem               | 19        |
|       | 34         | Bortsmouth          | 0         |
|       | <u>234</u> |                     | <u>43</u> |

Won 8 Lost 1 T 2

## NOTES -

Bob Fagg U of Miami Fresh. tackle.  
White Kimball Dartmouth center.  
Maurice Whalen Boston College - RG  
Jimmie Lyons Holy Cross - RT  
Charlie Caddoo Dummer Academy back.

## Roster :-

|    |                      |                          |                 |
|----|----------------------|--------------------------|-----------------|
| E  | Francis Sullivan     | Johnny Bishop            | Joseph Rucido   |
| T  | Eddie J. Reardon     | Howard Norton            | Irving Barth    |
| G  | Oscar Gilman         | Edward Blucinski         | Edward White    |
| C  | Gerald Lyons         | Stanley "Link" Morrison  | Malcolm Fellman |
| G  | Tom Flaherty         | Howard Holmes            | Arthur Gilman   |
| T  | Aram Herkian         | Herbert Dour             | Albert Haphoria |
| E  | Nelson Corey         | David "Tooky" Knight     | Mike Wanagel    |
| QB | Louis "Sonny" Canepa | Francis "Happy" Haulihan | Walter Jackson  |
| HB | Everett Fellows      | Donald Wing              | Alfred Burns    |
| HB | Albert Coltin        | Peter Gemma              | Clayton Welch   |
| F  | Arthur "Red" Marston | Ray Herkian              | Ernie Walton    |
| L  | Cronin               | J. Fogg                  | Wm. Cousins     |
| P  | Creeden              | (Over)                   | George Grant    |

(343)

1931

9/19

NHS 47

Johnson, N. Andover

0

NHS crushes Johnson - Houlihan stars.

Drive to prepare for St. James game starts - Undeclared in 4 seasons.

Johnson weak - did not make a single 1st down by rushing or passing.

Francis "Happy" "Mighty Mite" (171 lbs.)

Houlihan was the big star at QB.

"Sonny" Canepa with 3 TD's also had big day Use triple-pass several times w/ success.

PAT -

Knight 1 (pass)

Wing 4 (places)

TD - Canepa 3 Houlihan 1 (pass)

Wing 2 Ed Olucinski 1 (80 yd. kickoff ret.)

9/26

NHS 18

St. James

0

NHS smirches ST record - 1st to pin defeat on Haverhill team since 1926.

ST, a good team but outplayed by superior Npt. team.

Too much Fellows, Canepa & Wing.

Canepa played most of game at QB & scored twice - once on a pretty 44 yd. gallop.

ST lost 3 fumbles that proved disastrous.

On 3rd TD, Canepa ran 31 yds. to 1.

Gerald Lyons recovered ST fumble on Npt. 1 yd. line.

TD - Fellows 1 (7 yd. run)

Canepa 2 (44 yd. run)  
1 yd. run

344

(Continued)

1931

10/8

NHS

6

Beverly

6

Each team gets TD - inability to register point after TD results in deadlock. Both score in last period.

Edmund J. "Dodger" Carroll - Beverly coach. NHS expected a tough fight but Beverly was even stronger than expected - NHS buffeted & battered up & down the field.

NHS 71 yds Rush. Beverly 138 yds.

Not a pass completed in game.

Npt.'s TD came when Fellows pounced on a Bev. fumble at their 11, when Canepa was roughed up Bev. was penalized to their 3. Fellows dove over for only Npt. TD.

Bev. drove for tying TD sparked by penalties & a 26 yd. run by Belongie - when NHS piled on, locals were penalized to 2 where they scored. Ot. after was missed to preserve tie.

TD - Fellows 1 (3 yd. dive)

10/12

NHS 24

Fair Haven, Vt.

12

Large crowd of loyal fans follow team to Vt. - 1200 see listless game - score 12 pts. on Newbs.

Vt. greatly outweighed but plucky.

Outside a couple of long runs by Canepa & Jackson, locals didn't do much.

1<sup>st</sup> TD - N recovered fumbled punt on 20 - Marston scored from 5.

3<sup>rd</sup> T.D - Guilman recovered lateral on 30. Fellows ran 15 yds. to score.

TD - Marston 1 (5 yd. run)

Uling 1 (4 yd. run)

PAT -

Fellows 1 (rush)

Fellows 1 (15 yd. run)

Marston 1 (place)

Jackson 1 (15 yd. end run)

(Over)

345



1931

10/17

NHS 31

Lebanon

0

Lebanon proves easy prey for heavier locals. Running attack too much for Carver's 11.

NH boys hold NHS to 4-0 score at half - crumble & give up 19 pts. in 3rd quarter.

Canepa scored 1st TD from 5 but hard-tackling Leb. boys hold NHS to that 1 score.

Fourth TD - Canepa interc. pass at L 35 - a 12 yd. run by Marston - 20 yds. by Canepa with "Sonny" scoring from 3.

Last TD - Capt. Bishop blocked Leb. punt & Morrison recovered on 12 - Jackson scored.

Cete Stenna & Lyons were bears on defense.

|                   |                                |
|-------------------|--------------------------------|
|                   | TD - Canepa 2 (5 & 3 yd. runs) |
|                   | Uling 1 (20 yd. run)           |
| PAT -             | Fellows 1 (27 yd. run)         |
| Marston 1 (place) | Jackson 1 (12 yd. run)         |

10/24

NHS 32

Essex Aggies

0

NHS "plows the Farmers under" - feature sharp running & passing attack.

Game over by halftime - 24 to 0. Final breather

Lyons, Knight & Flaherty starred on defense.

The 5 TD's were scored by 5 diff. backs.

Forward pass of Jackson - nice to watch.

Not much to say for Aggie offense.

Npt. scored only 8 plays after open. Kickoff.

|                  |                                       |
|------------------|---------------------------------------|
|                  | TD - Uling 1 (1 yd. after 24 yd. run) |
|                  | Canepa 1 (rush - after 21 yd. run)    |
| PAT -            | Fellows 1 (11 yd. run)                |
| Fellows 1 (rush) | R. Kerkin 1 (2 yd. smash)             |
| Jackson 1 (drop) | Stenna 1 (rush)                       |

344

(Continued)

1931

10/31

NHS 20

Marblehead

0

Marb. no match for locale - display wide variety of attack - remain in select class of Undeclared Teams.

NHS riding high, wide & handsome.

"Sonny" Canepa, QB, kept Headers on run all afternoon with his tricks. 1,000 NHS fans.

Pete Stenna - outstanding as were the 2 "stevedores" Flaherty & Gilman.

Don Wing measured his way for 42 yds. for 1st TD in opening period.

2nd & 3rd TD's on 55 & 33 yds marches

NHS blocking by backs outstanding.

1st Npt. team to ever defeat Marb.

Players & band made trip in 4 large motor busses.

PAT-

Fellows 1 (rush)  
Jackson 1 (drop)

TD - Wing 2 (42 yds. run)  
Fellows 1 (Rush)

11/7

NHS

0

Lynn Classical

0

Bunting duel is only feature as strong LG defense baffles Crimson attack - biggest part of game played in midfield - neither goal threatened.

No long runs, long passes, sensational run backs - a drab afternoon.

|              | NHS | LC |
|--------------|-----|----|
| 1st Downs    | 9   | 4  |
| Rushing yds. | 155 | 72 |

Canepa only consistent gainer - carried ball most of time.

Absence of Stenna w/ his blocking hurt.

Flaherty the outstanding lineman - Knight, Gilman, Kerbian & Beardon performed well.

(347)

(Over)

11/14

1931

NHS 20 @ Amesbury 6

5,000 see lighter foes wilt before Npt. attack - NHS still has a clean slate.

Battled on even terms in 1st half, 6-6.

AHS scored in opening period - Larry "Shrikes" Moran crossed up NHS when a mudge to Gordon Clark pass was completed to NHS 10 - where Clark scored.

NHS tied game in 2nd period on a 40 yds march - Fellows scoring.

A touching tribute by the NHS Band to the late Knute Rockne was given at halftime.

Canepa scored tie breaker in 3rd period on an off-tackle smash.

AHS later held NHS on their 10.

Final TD was set up by G. Clark's only short punt of game - to his 35, Don Wing finally plunged over.

After game the NHS Band & numerous fans snake-danced thru the prominent streets of the town.

|                 | NHS                | AHS          |
|-----------------|--------------------|--------------|
| Rushing         | 60/251 yds.        | 27/43 yds.   |
| Passing         | 1/5 7 yds.         | 4/15 72 yds. |
| PAT -           | TD - Wing 1 (rush) |              |
| Wing 1 (place)  | Fellows 1 (rush)   |              |
| Canepa 1 (rush) | Canepa 1 (rush)    |              |

11/21

1931  
NHS 0 Salem

19

8,000 see great Broderick team again  
outclass local 11.

Muddy field - soaked by rains of past week.  
Gate receipts in excess of \$5,200 Salem \$500.-  
2 special trains bring fans from Salem.  
Scoreless 1st period, Salem scores in 2nd  
period & 2 TD's in 4th period to sew up game.  
Forward passes of Witche's poison for locals.  
Gilman, Reardon, Fellows out w/ injuries.  
NHS never threatened - Salem goal line  
has not been crossed all year.

NHS line great - allow only 4 1st downs rush.  
A case of another great Broderick team,  
too smart for most any of schoolboy machines in  
the Commonwealth.

Bill Broderick took his team to Haverhill  
for dinner after game - a great coach & a great  
fellow.

Flanckes  
11/26

NHS 34 Portsmouth 0

3,000 see Crimson overpower Ports, as  
Canepa, Wing & Fellows shine in their farewell battle.

Total 234 pts. - most ever by an NHS team  
& highest in Mass. for any major school.

Sonny Canepa wound up 3 yrs. of great FB.  
Game hardly 2 min. old when Wing had scored <sup>three</sup>  
A 19 yd. pass to P5 Canepa to Sullivan set  
up 3rd TD.

TD - Wing 2 (1-18 yd. run)  
PAT - Fellows 2 (5 & 30 yd. runs)  
Jackson 2 (drop) Wamagel 1 (39 yd. pass - Canepa)  
Houlahan 1 (pass - Jackson)  
Canepa 1 (rush)

(349)

(Over)

1931

Scoring - 1931

|                          | <u>TD</u> | <u>PAT</u> | <u>Total<br/>Pts.</u> |
|--------------------------|-----------|------------|-----------------------|
| Donald Wing              | 10        | 5          | 45                    |
| Everett Fellows          | 9         | 3          | 57                    |
| Louis "Sonny" Canepa     | 9         | 2          | 56                    |
| Walter Jackson           | 2         | 4          | 16                    |
| Arthur "Red" Marston     | 1         | 2          | 8                     |
| Francis "Happy" Houlahan | 1         | 1          | 7                     |
| Edward Blucinski         | 1         |            | 6                     |
| Ray Kerkian              | 1         |            | 6                     |
| Peter Genna              | 1         |            | 6                     |
| Mike Wamagel             | 1         |            | 6                     |
| David "Tooky" Knight     |           | 1          | 1                     |
|                          | <u>36</u> | <u>18</u>  | <u>234</u>            |

All Inter-scholastic 11 (outside of Gr. Boston

by Jerry Watson of the Boston Globe

Coaches All Star Essex County Team

Npt. News All Star Team

Aram Kerkian - Npt. guard





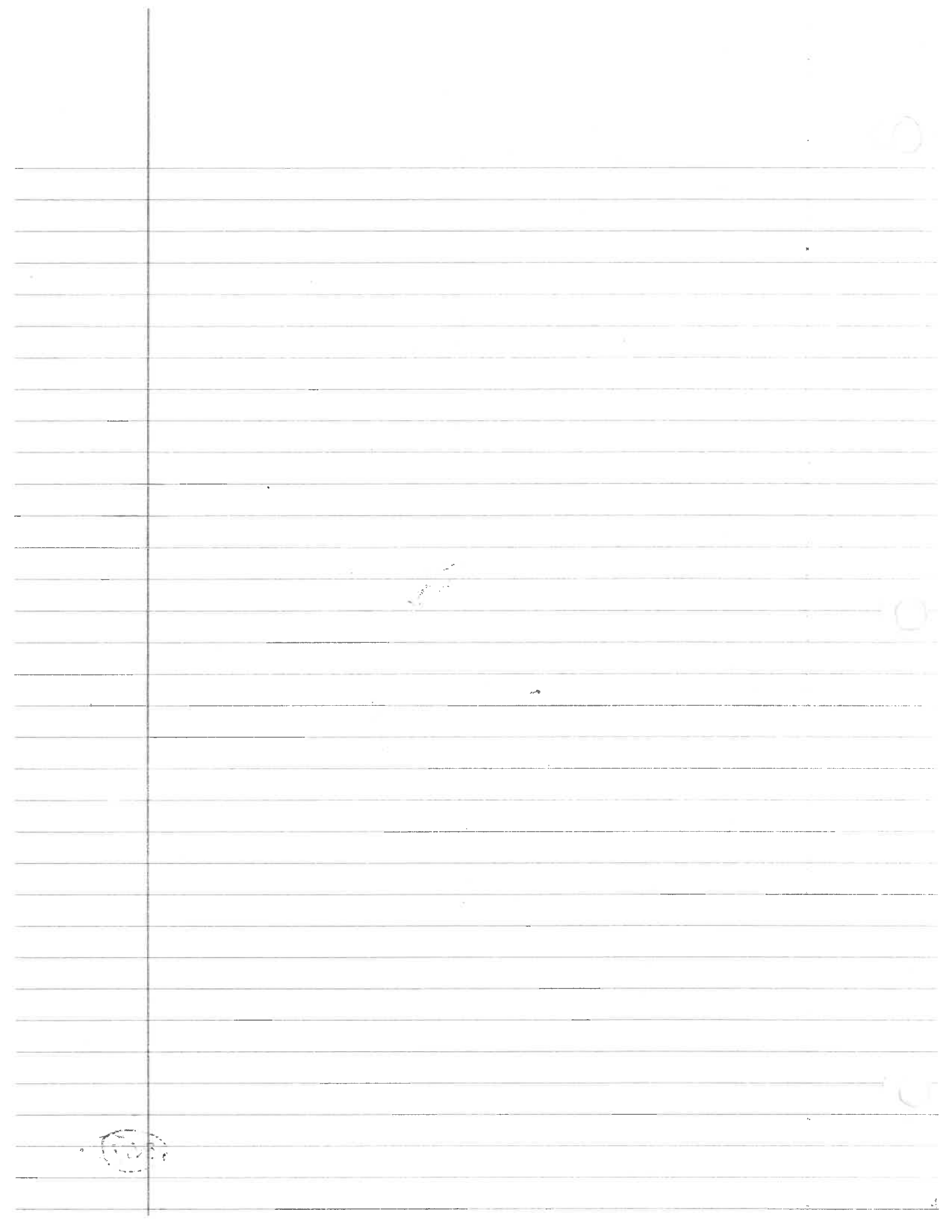
# NEWBURYPORT HIGH SCHOOL FOOTBALL SQUAD OF 1931

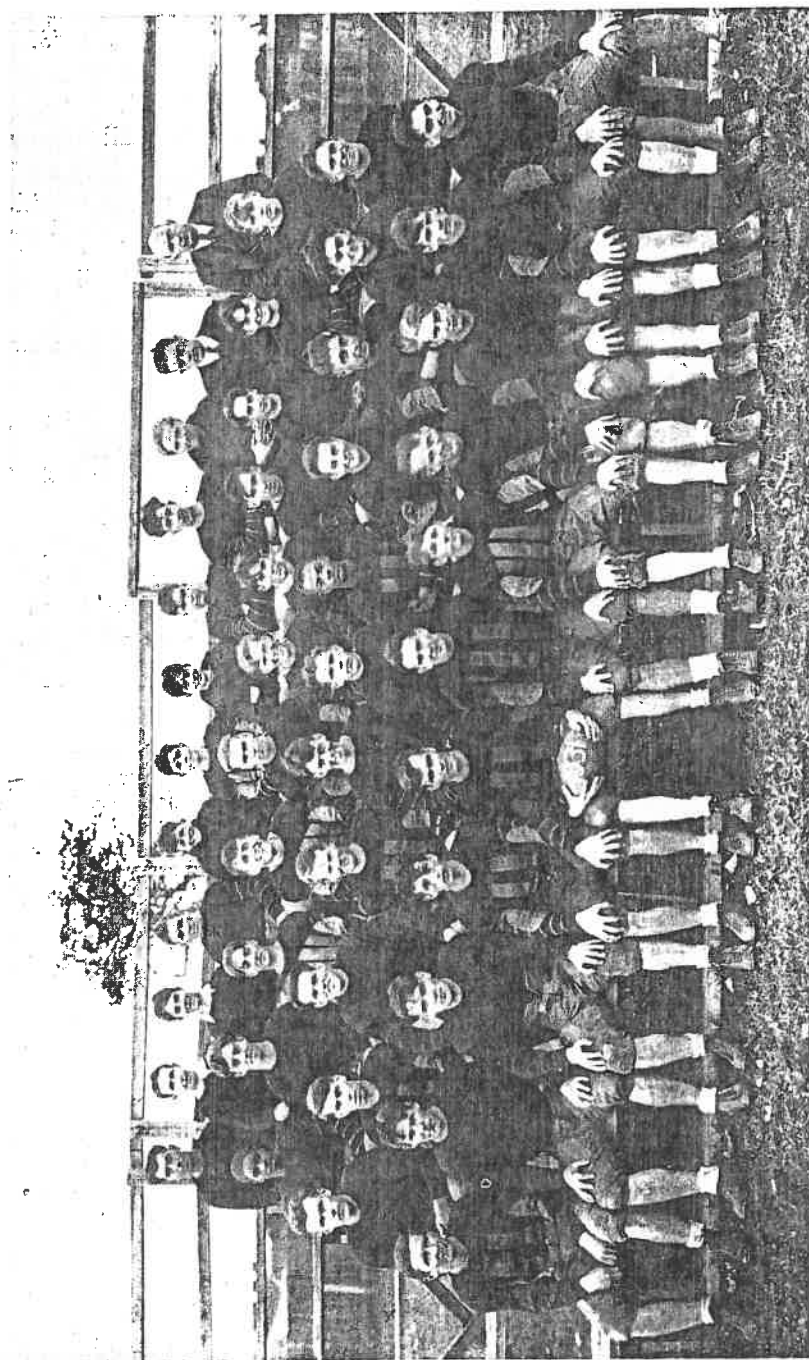
FRONT ROW: D. Wing, O. Gilman, T. Flaherty, L. Canepa, Capt. J. Bishop, E. Fellows, D. Knight, E. Reardon, G. Lyons, S. Morrison, A. Kerkian.

SECOND ROW: H. Norton, E. White, E. Plucinski, A. Marston, N. Young, M. Wanagel, W. Jackson, M. Fellman, P. Genna, R. Kerkian, F. Sullivan.

THIRD ROW: W. Cousins, A. Hopkins, J. Fogg, N. Corey, H. Dow, E. Walton, A. Gilman, C. Welch, A. Byrnes, J. Barth, H. Holmes.

FOURTH ROW: Asst. Coach Gulazian, Mgr. D. LaPlante, Asst. Mgr. R. True, L. Cronin, J. Creeden, F. Houlihan, D. Meader, G. Grant, N. Giles, J. Rucidlo, Asst. Coach Pike, Coach Borah.





#### NEWBURYPORT HIGH SCHOOL FOOTBALL SQUAD OF 1934

Front Row—D. Wing, O. Gilman, T. Flaherty, L. Canepa, Capt. J. Bishop, E. Fellows, D. Knight, E. Reardon, G. Lyons, S. Morrison, A. Kerkian.  
 Second Row—H. Norton, E. White, E. Plucinski, A. Marston, N. Young, M. Wanagel, W. Jackson, M. Fellman, P. Genna, R. Kerkian, F. Sullivan.  
 Third Row—W. Cousins, A. Hopkins, J. Fogg, N. Corey, H. Dow, E. Walton, A. Gilman, C. Welch, A. Byrnes, I. Barth, H. Holmes.  
 Fourth Row—Asst. Coach Gulazian, Mgr. D. Laplante, Asst. Mgr. R. True, L. Cronin, J. Creedon, F. Houlihan, D. Meader, G. Grant, N. Giles,  
 J. Rucidlo, Asst. Coach Pike, Coach Borah.

